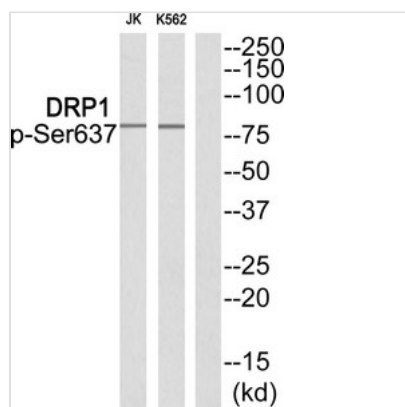




Phospho-DNM1L (Ser637) Antibody

| | |
|----------------------------|--|
| Product Code | CSB-PA297783 |
| Storage | Upon receipt, store at -20°C or -80°C. Avoid repeated freeze. |
| Uniprot No. | O00429 |
| Immunogen | Peptide sequence around phosphorylation site of Serine637(K-L-S(p)-A-R) derived from Human DRP1. |
| Raised In | Rabbit |
| Species Reactivity | Human,Mouse,Rat |
| Specificity | The antibody detects endogenous levels of DRP1 only when phosphorylated at serine 637. |
| Tested Applications | ELISA,WB;WB:1:500-1:1000 |
| Form | Rabbit IgG in phosphate buffered saline (without Mg ²⁺ and Ca ²⁺), pH 7.4, 150mM NaCl, 0.02% sodium azide and 50% glycerol. |
| Purification Method | Antibodies were produced by immunizing rabbits with synthetic phosphopeptide and KLH conjugates. Antibodies were purified by affinity-chromatography using epitope-specific phosphopeptide. Non-phospho specific antibodies were removed by chromatography |
| Clonality | Polyclonal |
| Alias | DLP1; DNM1L; DRP1; DVLP; Dymple |
| Product Type | Polyclonal Antibody |
| Immunogen Species | Homo sapiens (Human) |
| Target Names | DNM1L |

Image



Western blot analysis of extracts from JK cells and K562 cells using DRP1 (Phospho-Ser637) Antibody. The lane on the right is treated with the antigen-specific peptide.

| | |
|-----------------------|----------------|
| Product Modify | Phospho-Ser637 |
|-----------------------|----------------|