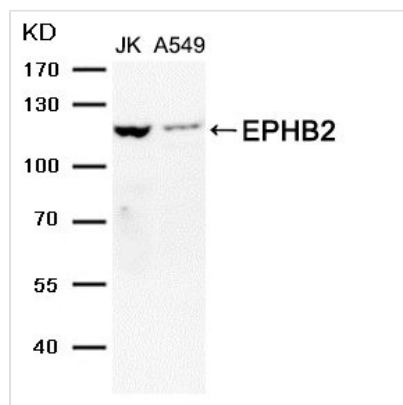




EPHB2 Antibody

Product Code	CSB-PA945346
Storage	Upon receipt, store at -20°C or -80°C. Avoid repeated freeze.
Uniprot No.	P29323
Immunogen	Peptide sequence around aa.896~900 (L-S-S-G-I) derived Human from EPHB2.
Species Reactivity	Human,Mouse,Rat
Specificity	The antibody detects endogenous level of total EPHB2 protein.
Tested Applications	ELISA,WB;WB:1:500-1:1000
Form	Supplied at 1.0mg/mL in phosphate buffered saline (without Mg ²⁺ and Ca ²⁺), pH 7.4, 150mM NaCl, 0.02% sodium azide and 50% glycerol.
Purification Method	Antibodies were produced by immunizing rabbits with synthetic peptide and KLH conjugates. Antibodies were purified by affinity-chromatography using epitope-specific peptide.
Clonality	Polyclonal
Alias	CAPB; DRT; EK5; EPH receptor B2; Ephrin type-B receptor 2
Product Type	Polyclonal Antibody
Immunogen Species	Homo sapiens (Human)
Target Names	EPHB2

Image



Western blot analysis of extracts from JK and A549 cells using EPHB2 Antibody .