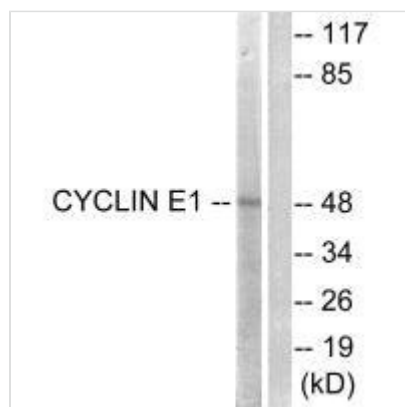




CCNE1 (Ab-395) Antibody

Product Code	CSB-PA154174
Storage	Upon receipt, store at -20°C or -80°C. Avoid repeated freeze.
Uniprot No.	P24864
Immunogen	Synthesized non-phosphopeptide derived from Human Cyclin E1 around the phosphorylation site of threonine 395 (L-L-T-P-P).
Raised In	Rabbit
Species Reactivity	Human,Mouse
Specificity	The antibody detects endogenous levels of total Cyclin E1 protein.
Tested Applications	ELISA,WB,IHC,IF;WB:1:500-1:3000,IHC:1:50-1:100,IF:1:100-1:500
Form	Rabbit IgG in phosphate buffered saline (without Mg ²⁺ and Ca ²⁺), pH 7.4, 150mM NaCl, 0.02% sodium azide and 50% glycerol.
Purification Method	The antibody was affinity-purified from rabbit antiserum by affinity-chromatography using epitope-specific immunogen.
Clonality	Polyclonal
Alias	CCNE; CCNE1; G1/S-specific cyclin E1;
Product Type	Polyclonal Antibody
Immunogen Species	Homo sapiens (Human)
Target Names	CCNE1

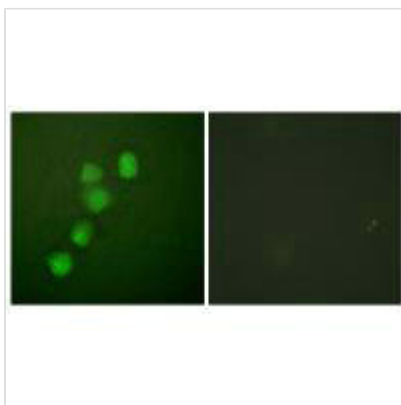
Image



Western blot analysis of extracts from HeLa cells, treated with Paclitaxel (1uM, 60mins), using Cyclin E1 (Ab-395) antibody.



Immunohistochemical analysis of paraffin-embedded human colon carcinoma tissue using Cyclin E1 (Ab-395) antibody.



Immunofluorescence analysis of HuvEc cells, using Cyclin E1 (Ab-395) antibody.