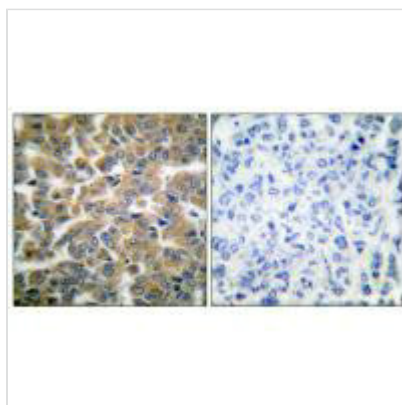




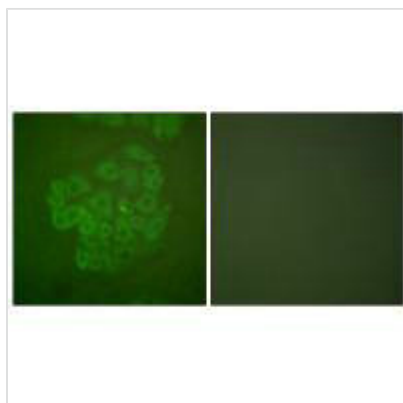
NR3C1 (Ab-211) Antibody

Product Code	CSB-PA784840
Storage	Upon receipt, store at -20°C or -80°C. Avoid repeated freeze.
Uniprot No.	P04150
Immunogen	Synthesized non-phosphopeptide derived from Human GR around the phosphorylation site of serine 211 (N-E-S-P-W).
Raised In	Rabbit
Species Reactivity	Human,Mouse,Rat
Specificity	The antibody detects endogenous levels of total GR protein.
Tested Applications	ELISA,WB,IHC,IF;WB:1:500-1:3000,IHC:1:50-1:100,IF:1:100-1:500
Form	Rabbit IgG in phosphate buffered saline (without Mg ²⁺ and Ca ²⁺), pH 7.4, 150mM NaCl, 0.02% sodium azide and 50% glycerol.
Purification Method	The antibody was affinity-purified from rabbit antiserum by affinity-chromatography using epitope-specific immunogen.
Clonality	Polyclonal
Alias	GCR; GRL; GRL1; NR3C1; glucocorticoid receptor
Product Type	Polyclonal Antibody
Immunogen Species	Homo sapiens (Human)
Target Names	NR3C1

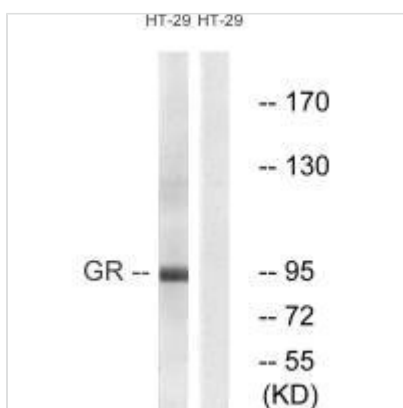
Image



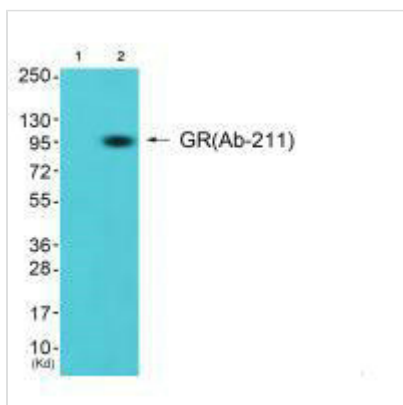
Immunohistochemical analysis of paraffin-embedded human breast carcinoma tissue using GR (Ab-211) antibody.



Immunofluorescence analysis of A549 cells, using GR (Ab-211) antibody.



Western blot analysis of extracts from HeLa cells treated with PMA (125ng/ml, 30min), using GR (Ab-211) antibody.



Western blot analysis of extracts from K562 cells (Lane 2), using GR (Ab-211) antibody. The lane on the left is treated with synthesized peptide.