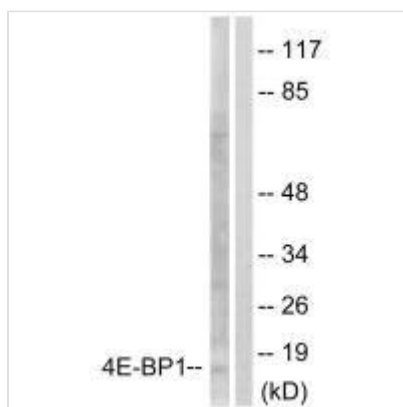




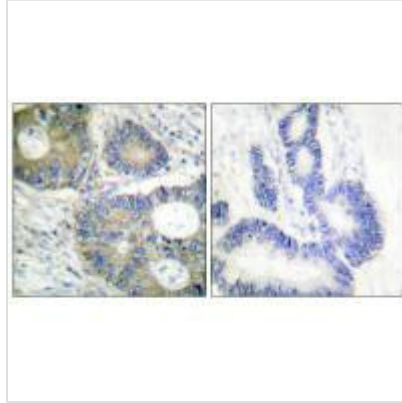
# EIF4EBP1 (Ab-64) Antibody

<b>Product Code</b>	CSB-PA591428
<b>Storage</b>	Upon receipt, store at -20°C or -80°C. Avoid repeated freeze.
<b>Uniprot No.</b>	Q13541
<b>Immunogen</b>	Synthesized non-phosphopeptide derived from Human 4E-BP1 around the phosphorylation site of serine 65 (R-N-S(p)-P-V).
<b>Raised In</b>	Rabbit
<b>Species Reactivity</b>	Human,Mouse,Rat
<b>Specificity</b>	The antibody detects endogenous levels of total 4E-BP1 protein.
<b>Tested Applications</b>	ELISA,WB,IHC;WB:1:500-1:3000,IHC:1:50-1:100
<b>Form</b>	Rabbit IgG in phosphate buffered saline (without Mg <sup>2+</sup> and Ca <sup>2+</sup> ), pH 7.4, 150mM NaCl, 0.02% sodium azide and 50% glycerol.
<b>Purification Method</b>	The antibody was affinity-purified from rabbit antiserum by affinity-chromatography using epitope-specific immunogen.
<b>Clonality</b>	Polyclonal
<b>Alias</b>	4EBP1; EIF4EBP1; P/OKCL.6; PHAS-1;
<b>Product Type</b>	Polyclonal Antibody
<b>Immunogen Species</b>	Homo sapiens (Human)
<b>Target Names</b>	EIF4EBP1

## Image



Western blot analysis of extracts from Jurkat cells, treated with Insulin (0.01U/ml, 15mins), using 4E-BP1 (Ab-64) antibody.



Immunohistochemical analysis of paraffin-embedded human colon carcinoma tissue using 4E-BP1 (Ab-64) antibody.

## Usage

For Research Use Only. Not for use in diagnostic or therapeutic procedures.