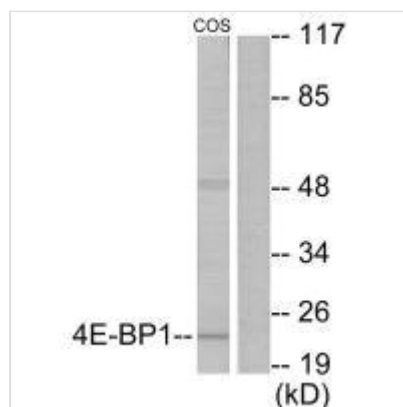




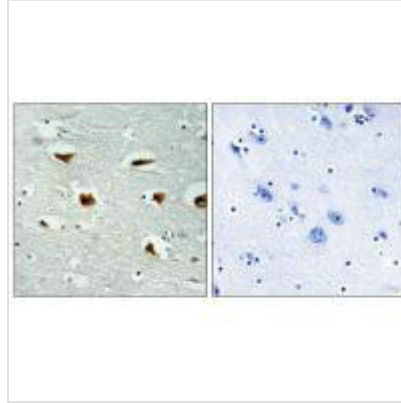
EIF4EBP1 (Ab-69) Antibody

| | |
|----------------------------|--|
| Product Code | CSB-PA936560 |
| Storage | Upon receipt, store at -20°C or -80°C. Avoid repeated freeze. |
| Uniprot No. | Q13541 |
| Immunogen | Synthesized non-phosphopeptide derived from Human 4E-BP1 around the phosphorylation site of threonine 70 (A-K-T-P-P). |
| Raised In | Rabbit |
| Species Reactivity | Human,Mouse,Rat |
| Specificity | The antibody detects endogenous levels of total 4E-BP1 protein. |
| Tested Applications | ELISA,WB,IHC;WB:1:500-1:3000,IHC:1:50-1:100 |
| Form | Rabbit IgG in phosphate buffered saline (without Mg ²⁺ and Ca ²⁺), pH 7.4, 150mM NaCl, 0.02% sodium azide and 50% glycerol. |
| Purification Method | The antibody was affinity-purified from rabbit antiserum by affinity-chromatography using epitope-specific immunogen. |
| Clonality | Polyclonal |
| Alias | 4EBP1; EIF4EBP1; P/OKCL6; PHAS-1; |
| Product Type | Polyclonal Antibody |
| Immunogen Species | Homo sapiens (Human) |
| Target Names | EIF4EBP1 |

Image



Western blot analysis of extracts from COS7 cells, treated with EGF (200ng/ml, 30mins), using 4E-BP1 (Ab-69) antibody.



Immunohistochemical analysis of paraffin-embedded human colon carcinoma tissue using 4E-BP1 (Ab-69) antibody.

Usage

For Research Use Only. Not for use in diagnostic or therapeutic procedures.