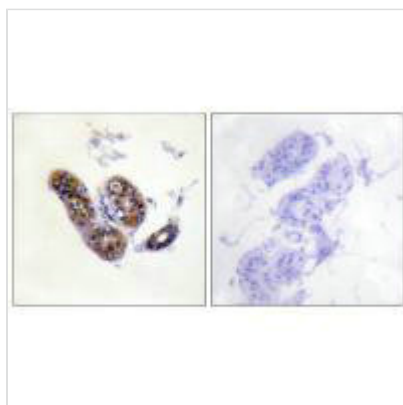




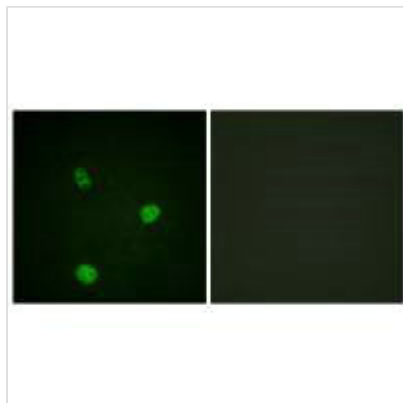
# MITF (Ab-180/73) Antibody

<b>Product Code</b>	CSB-PA257242
<b>Storage</b>	Upon receipt, store at -20°C or -80°C. Avoid repeated freeze.
<b>Uniprot No.</b>	O75030
<b>Immunogen</b>	Synthesized non-phosphopeptide derived from Human MITF around the phosphorylation site of serine 180/73 (P-N-S(p)-P-M).
<b>Raised In</b>	Rabbit
<b>Species Reactivity</b>	Human, Mouse
<b>Specificity</b>	The antibody detects endogenous levels of total MITF protein.
<b>Tested Applications</b>	ELISA, WB, IHC, IF; WB: 1:500-1:3000, IHC: 1:50-1:100, IF: 1:100-1:500
<b>Form</b>	Rabbit IgG in phosphate buffered saline (without Mg <sup>2+</sup> and Ca <sup>2+</sup> ), pH 7.4, 150mM NaCl, 0.02% sodium azide and 50% glycerol.
<b>Purification Method</b>	The antibody was affinity-purified from rabbit antiserum by affinity-chromatography using epitope-specific immunogen.
<b>Clonality</b>	Polyclonal
<b>Alias</b>	MITF M1; Microphthalmia-associated transcription factor;
<b>Product Type</b>	Polyclonal Antibody
<b>Immunogen Species</b>	Homo sapiens (Human)
<b>Target Names</b>	MITF

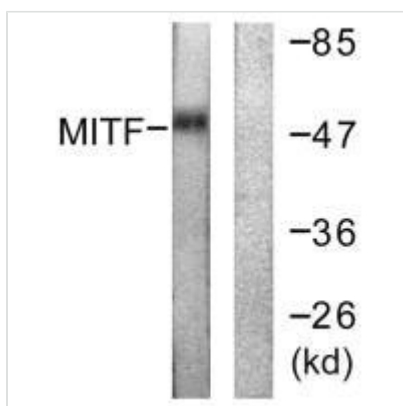
## Image



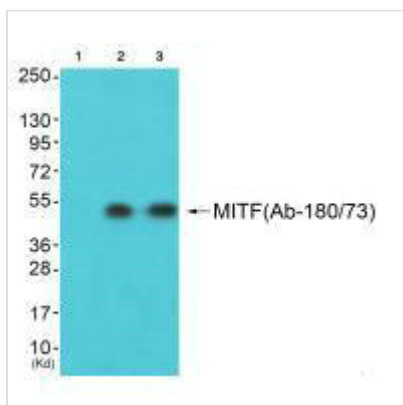
Immunohistochemistry analysis of paraffin-embedded human skin tissue using MITF (Ab-180/73) antibody.



Immunofluorescence analysis of HeLa cells, using MITF (Ab-180/73) antibody.



Western blot analysis of extracts from HepG2 cells (lane 1) and COLO205 cells (lane 2), using MITF (Ab-180/73) antibody.



Western blot analysis of extracts from HepG2 cells (Lane 2) and 3T3 cells (Lane 3), using MITF (Ab-180/73) antibody. The lane on the left is treated with synthesized peptide.

**Usage**

For Research Use Only. Not for use in diagnostic or therapeutic procedures.