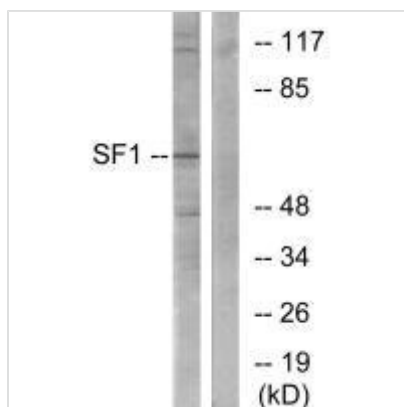




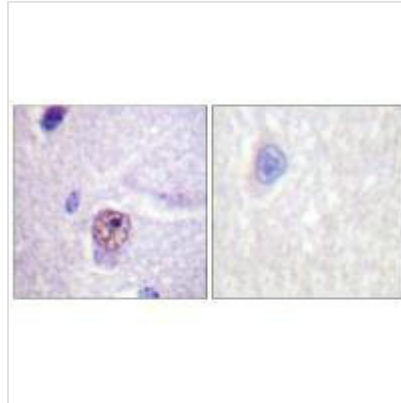
SF1 (Ab-82) Antibody

Product Code	CSB-PA963117
Storage	Upon receipt, store at -20°C or -80°C. Avoid repeated freeze.
Uniprot No.	Q15637
Immunogen	Synthesized non-phosphopeptide derived from Human SF1 around the phosphorylation site of serine 82 (S-P-S(p)-P-E).
Raised In	Rabbit
Species Reactivity	Human, Mouse
Specificity	The antibody detects endogenous levels of total SF1 protein.
Tested Applications	ELISA, WB, IHC, IF; WB: 1:500-1:3000, IHC: 1:50-1:100, IF: 1:100-1:500
Form	Rabbit IgG in phosphate buffered saline (without Mg ²⁺ and Ca ²⁺), pH 7.4, 150mM NaCl, 0.02% sodium azide and 50% glycerol.
Purification Method	The antibody was affinity-purified from rabbit antiserum by affinity-chromatography using epitope-specific immunogen.
Clonality	Polyclonal
Alias	BBP; CW17; Mammalian branch point binding protein mBBP; SF01; Splicing factor 1
Product Type	Polyclonal Antibody
Immunogen Species	Homo sapiens (Human)
Target Names	SF1

Image



Western blot analysis of extracts from COLO205 cells, using SF1 (Ab-82) antibody.



Immunohistochemistry analysis of paraffin-embedded human brain tissue using SF1 (Ab-82) antibody.



Immunofluorescence analysis of HeLa cells, using SF1 (Ab-82) antibody.

Usage

For Research Use Only. Not for use in diagnostic or therapeutic procedures.