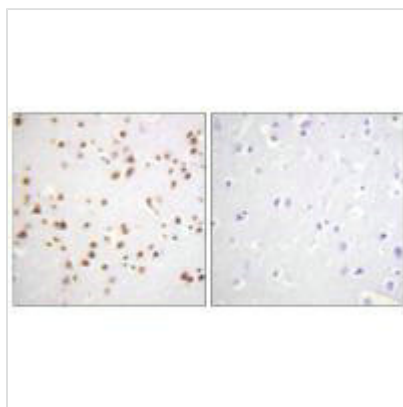




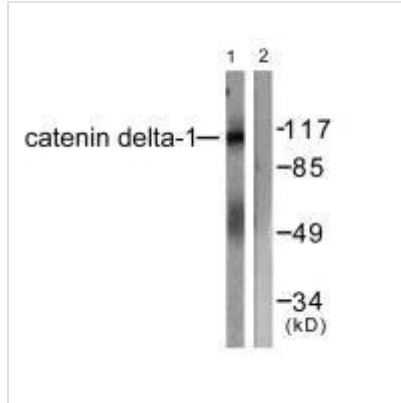
# CTNND1 (Ab-228) Antibody

<b>Product Code</b>	CSB-PA796013
<b>Storage</b>	Upon receipt, store at -20°C or -80°C. Avoid repeated freeze.
<b>Uniprot No.</b>	O60716
<b>Immunogen</b>	Synthesized non-phosphopeptide derived from Human Catenin- $\delta$ 1 around the phosphorylation site of tyrosine 228 (D-N-Y(p)-G-S).
<b>Raised In</b>	Rabbit
<b>Species Reactivity</b>	Human,Mouse,Rat
<b>Specificity</b>	The antibody detects endogenous levels of total Catenin- $\delta$ 1 protein.
<b>Tested Applications</b>	ELISA,WB,IHC;WB:1:500-1:3000,IHC:1:50-1:100
<b>Form</b>	Rabbit IgG in phosphate buffered saline (without Mg <sup>2+</sup> and Ca <sup>2+</sup> ), pH 7.4, 150mM NaCl, 0.02% sodium azide and 50% glycerol.
<b>Purification Method</b>	The antibody was affinity-purified from rabbit antiserum by affinity-chromatography using epitope-specific immunogen.
<b>Clonality</b>	Polyclonal
<b>Alias</b>	CAS; CATNS; CTD1; CTND1; Cadherin-associated Src substrate
<b>Product Type</b>	Polyclonal Antibody
<b>Immunogen Species</b>	Homo sapiens (Human)
<b>Target Names</b>	CTNND1

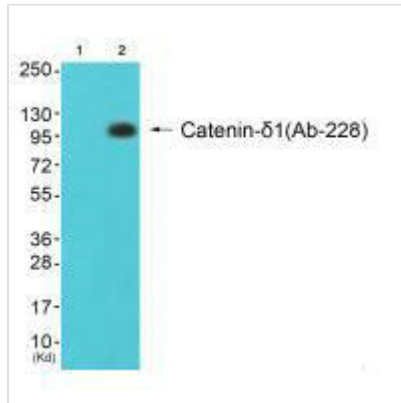
## Image



Immunohistochemistry analysis of paraffin-embedded human brain tissue using Catenin- $\delta$ 1 (Ab-228) antibody.



Western blot analysis of extracts from HuvEc cells, using Catenin- $\delta$ 1 (Ab-228) antibody.



Western blot analysis of extracts from 293 cells (Lane 2), using Catenin- $\delta$ 1 (Ab-228) antibody. The lane on the left is treated with synthesized peptide.

**Usage**

For Research Use Only. Not for use in diagnostic or therapeutic procedures.