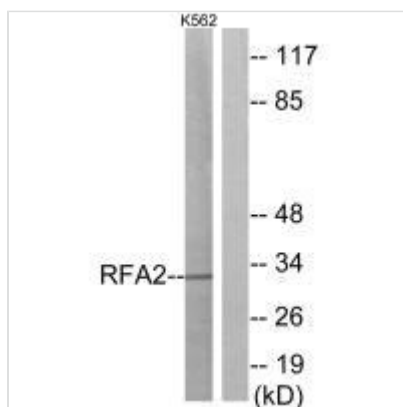




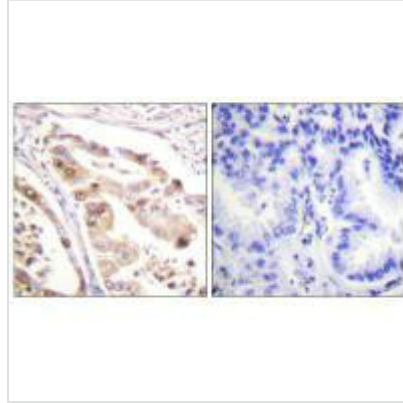
RPA2 (Ab-21) Antibody

Product Code	CSB-PA086465
Storage	Upon receipt, store at -20°C or -80°C. Avoid repeated freeze.
Uniprot No.	P15927
Immunogen	Synthesized non-phosphopeptide derived from Human RFA2 around the phosphorylation site of threonine 21 (G-Y-T(p)-Q-S).
Raised In	Rabbit
Species Reactivity	Human, Mouse
Specificity	The antibody detects endogenous levels of total RFA2 protein
Tested Applications	ELISA, WB, IHC; WB: 1:500-1:3000, IHC: 1:50-1:100
Form	Rabbit IgG in phosphate buffered saline (without Mg ²⁺ and Ca ²⁺), pH 7.4, 150mM NaCl, 0.02% sodium azide and 50% glycerol.
Purification Method	The antibody was affinity-purified from rabbit antiserum by affinity-chromatography using epitope-specific immunogen.
Clonality	Polyclonal
Alias	REPA2; RF-A; RP-A; RPA2; RPA32
Product Type	Polyclonal Antibody
Immunogen Species	Homo sapiens (Human)
Target Names	RPA2

Image



Western blot analysis of extracts from K562 cells, using RFA2 (Ab-21) antibody.



Immunohistochemistry analysis of paraffin-embedded human lung carcinoma tissue using RFA2 (Ab-21) antibody.

Usage

For Research Use Only. Not for use in diagnostic or therapeutic procedures.