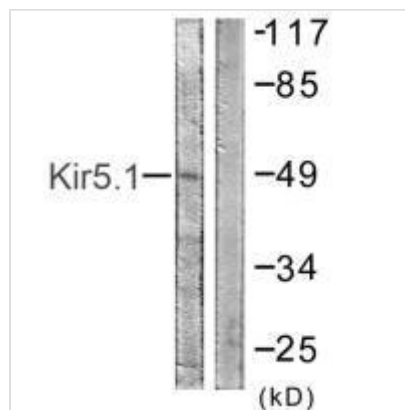




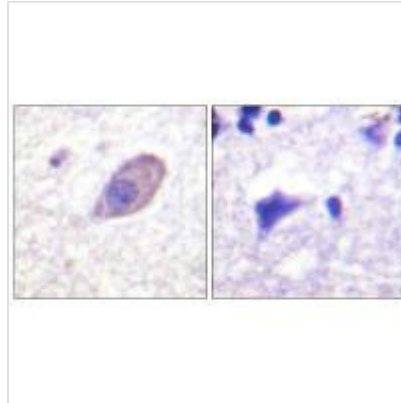
KCNJ16 (Ab-416) Antibody

Product Code	CSB-PA281454
Storage	Upon receipt, store at -20°C or -80°C. Avoid repeated freeze.
Uniprot No.	Q9NPI9
Immunogen	Synthesized non-phosphopeptide derived from Human Kir5.
Raised In	Rabbit
Species Reactivity	Human,Mouse,Rat
Specificity	The antibody detects endogenous levels of total Kir5.1 protein.
Tested Applications	ELISA,WB,IHC,IF;WB:1:500-1:3000,IHC:1:50-1:100,IF:1:100-1:500
Form	Rabbit IgG in phosphate buffered saline (without Mg ²⁺ and Ca ²⁺), pH 7.4, 150mM NaCl, 0.02% sodium azide and 50% glycerol.
Purification Method	The antibody was affinity-purified from rabbit antiserum by affinity-chromatography using epitope-specific immunogen.
Clonality	Polyclonal
Alias	Inward rectifier K channel Kir5.1; IRK16; IRKG; KCNJ16; Potassium channel
Product Type	Polyclonal Antibody
Immunogen Species	Homo sapiens (Human)
Target Names	KCNJ16

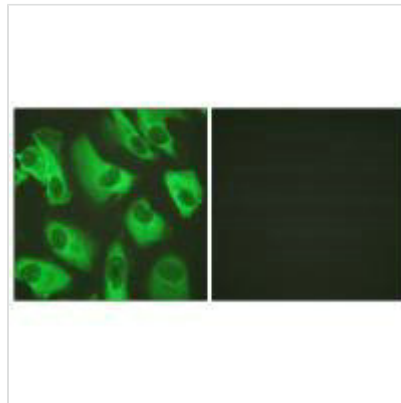
Image



Western blot analysis of extracts from HeLa cells, using Kir5.1 (Ab-416) antibody.



Immunohistochemistry analysis of paraffin-embedded human brain tissue using Kir5.1 (Ab-416) antibody.



Immunofluorescence analysis of HeLa cells, using Kir5.1 (Ab-416) antibody.

Usage

For Research Use Only. Not for use in diagnostic or therapeutic procedures.