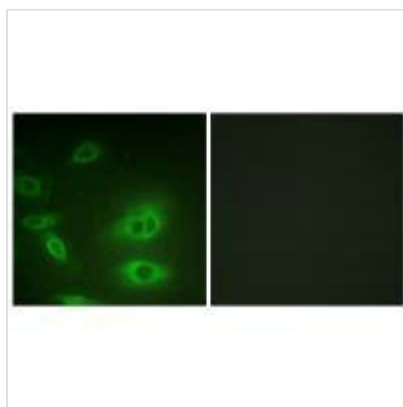




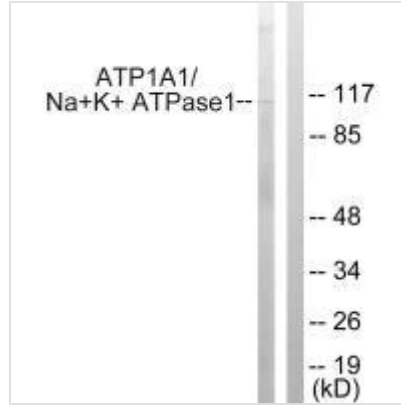
# Atp1a1 (Ab-23) Antibody

<b>Product Code</b>	CSB-PA779386
<b>Storage</b>	Upon receipt, store at -20°C or -80°C. Avoid repeated freeze.
<b>Uniprot No.</b>	P06685
<b>Immunogen</b>	Synthesized non-phosphopeptide derived from Human ATP1 $\alpha$ 1/Na+K+ ATPase1 around the phosphorylation site of serine 23 (K-K-S(p)-K-K).
<b>Raised In</b>	Rabbit
<b>Species Reactivity</b>	Human,Rat
<b>Specificity</b>	The antibody detects endogenous levels of total ATP1 $\alpha$ 1/Na+K+ ATPase1 protein.
<b>Tested Applications</b>	ELISA,WB,IF;WB:1:500-1:3000,IF:1:100-1:500
<b>Form</b>	Rabbit IgG in phosphate buffered saline (without Mg <sup>2+</sup> and Ca <sup>2+</sup> ), pH 7.4, 150mM NaCl, 0.02% sodium azide and 50% glycerol.
<b>Purification Method</b>	The antibody was affinity-purified from rabbit antiserum by affinity-chromatography using epitope-specific immunogen.
<b>Clonality</b>	Polyclonal
<b>Alias</b>	A1A1; AT1A1; ATPase; Na+/K+ transporting; alpha 1 polypeptide
<b>Product Type</b>	Polyclonal Antibody
<b>Immunogen Species</b>	Rattus norvegicus (Rat)
<b>Target Names</b>	Atp1a1

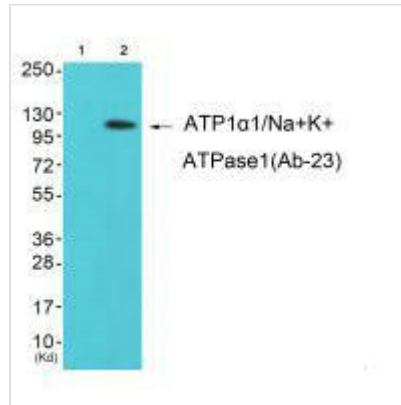
## Image



Immunofluorescence analysis of HeLa cells, using ATP1 $\alpha$ 1/Na+K+ ATPase1 (Ab-23) antibody.



Western blot analysis of extracts from HeLa cells, using ATP1 $\alpha$ 1/Na+K+ ATPase1 (Ab-23) antibody.



Western blot analysis of extracts from K562 cells (Lane 2), using ATP1 $\alpha$ 1/Na+K+ ATPase1 (Ab-23) antibody. The lane on the left is treated with synthesized peptide.

**Usage**

For Research Use Only. Not for use in diagnostic or therapeutic procedures.