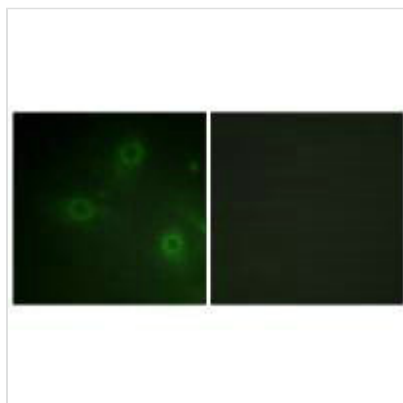




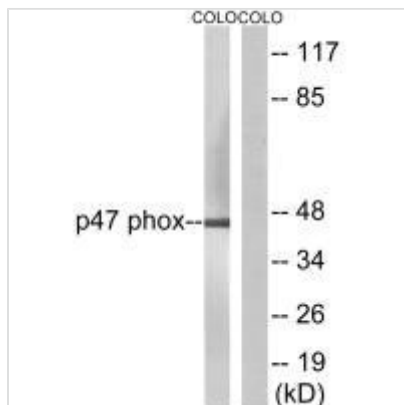
NCF1 (Ab-304) Antibody

| | |
|----------------------------|--|
| Product Code | CSB-PA046087 |
| Storage | Upon receipt, store at -20°C or -80°C. Avoid repeated freeze. |
| Uniprot No. | P14598 |
| Immunogen | Synthesized non-phosphopeptide derived from Human Neutrophil Cytosol Factor 1 around the phosphorylation site of serine 304 (R-S-S(p)-I-R). |
| Raised In | Rabbit |
| Species Reactivity | Human |
| Specificity | The antibody detects endogenous levels of total Neutrophil Cytosol Factor 1 protein. |
| Tested Applications | ELISA,WB,IF;WB:1:500-1:3000,IF:1:100-1:500 |
| Form | Rabbit IgG in phosphate buffered saline (without Mg ²⁺ and Ca ²⁺), pH 7.4, 150mM NaCl, 0.02% sodium azide and 50% glycerol. |
| Purification Method | The antibody was affinity-purified from rabbit antiserum by affinity-chromatography using epitope-specific immunogen. |
| Clonality | Polyclonal |
| Alias | 47 kDa autosomal chronic granulomatous disease protein; 47 kDa neutrophil oxidase factor; NCF-1; NCF-47K; NCF1 |
| Product Type | Polyclonal Antibody |
| Immunogen Species | Homo sapiens (Human) |
| Target Names | NCF1 |

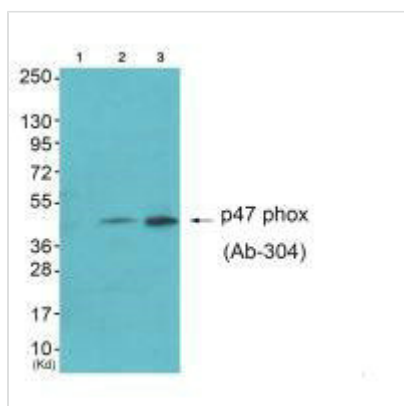
Image



Immunofluorescence analysis of HeLa cells, using Neutrophil Cytosol Factor 1 (Ab-304) antibody.



Western blot analysis of extracts from colo cells, using Neutrophil Cytosol Factor 1 (Ab-304) antibody.



Western blot analysis of extracts from HepG2 cells (Lane 2) and Jurket cells (Lane 3), using Neutrophil Cytosol Factor 1 (Ab-304) antibody. The lane on the left is treated with synthesized peptide.

Usage

For Research Use Only. Not for use in diagnostic or therapeutic procedures.