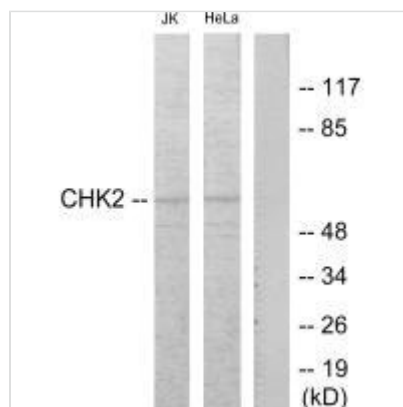




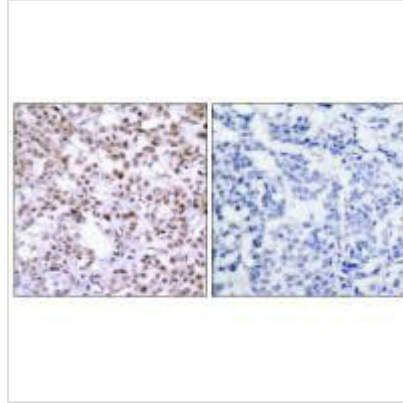
CHEK2 (Ab-68) Antibody

| | |
|----------------------------|----------------------------------------------------------------------------------------------------------------------------------------------------|
| Product Code | CSB-PA884585 |
| Storage | Upon receipt, store at -20°C or -80°C. Avoid repeated freeze. |
| Uniprot No. | O96017 |
| Immunogen | Synthesized non-phosphopeptide derived from Human Chk2 around the phosphorylation site of threonine 68. |
| Raised In | Rabbit |
| Species Reactivity | Human,Mouse,Rat |
| Specificity | The antibody detects endogenous levels of total Chk2 protein. |
| Tested Applications | ELISA,WB,IHC;WB:1:500-1:3000,IHC:1:50-1:100 |
| Form | Rabbit IgG in phosphate buffered saline (without Mg ²⁺ and Ca ²⁺), pH 7.4, 150mM NaCl, 0.02% sodium azide and 50% glycerol. |
| Purification Method | The antibody was affinity-purified from rabbit antiserum by affinity-chromatography using epitope-specific immunogen. |
| Clonality | Polyclonal |
| Alias | CHEK2; CHK2; Cds1; Chk2; EC 2.7.11.1 |
| Product Type | Polyclonal Antibody |
| Immunogen Species | Homo sapiens (Human) |
| Target Names | CHEK2 |

Image



Western blot analysis of extracts from Jurkat and HeLa cells treated with etoposide 25uM 24hours, using Chk2 (Ab-68) antibody.



Immunohistochemistry analysis of paraffin-embedded human breast carcinoma, using Chk2 (Ab-68) antibody.

Usage

For Research Use Only. Not for use in diagnostic or therapeutic procedures.