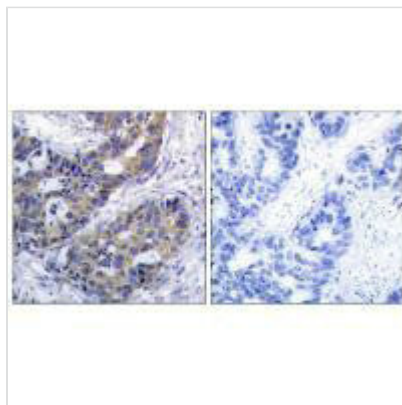




IRS1 (Ab-312) Antibody

Product Code	CSB-PA143388
Storage	Upon receipt, store at -20°C or -80°C. Avoid repeated freeze.
Uniprot No.	P35568
Immunogen	Synthesized non-phosphopeptide derived from Human IRS-1 around the phosphorylation site of serine 312 (A-T-S(p)-P-A).
Raised In	Rabbit
Species Reactivity	Human,Mouse,Rat
Specificity	The antibody detects endogenous levels of total IRS-1 protein.
Tested Applications	ELISA,WB,IHC,IF;WB:1:500-1:3000,IHC:1:50-1:100,IF:1:100-1:500
Form	Rabbit IgG in phosphate buffered saline (without Mg ²⁺ and Ca ²⁺), pH 7.4, 150mM NaCl, 0.02% sodium azide and 50% glycerol.
Purification Method	The antibody was affinity-purified from rabbit antiserum by affinity-chromatography using epitope-specific immunogen.
Clonality	Polyclonal
Alias	Insulin receptor substrate-1; IRS-1; IRS1;
Product Type	Polyclonal Antibody
Immunogen Species	Homo sapiens (Human)
Target Names	IRS1

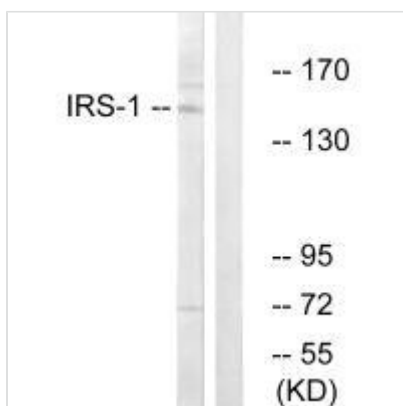
Image



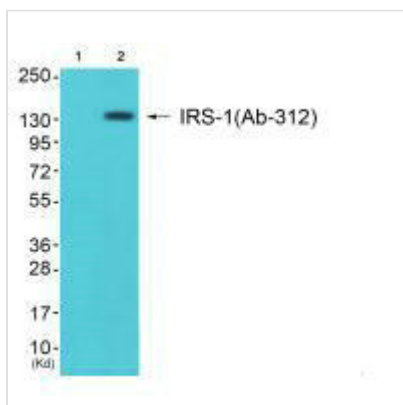
Immunohistochemistry analysis of paraffin-embedded human breast carcinoma tissue, using IRS-1 (Ab-312) antibody.



Immunofluorescence analysis of HeLa cells, using IRS-1 (Ab-312) antibody.



Western blot analysis of extracts from NIH-3T3 cells, using IRS-1 (Ab-312) antibody.



Western blot analysis of extracts from JK cells (Lane 2), using IRS-1 (Ab-312) antibody. The lane on the left is treated with synthesized peptide.