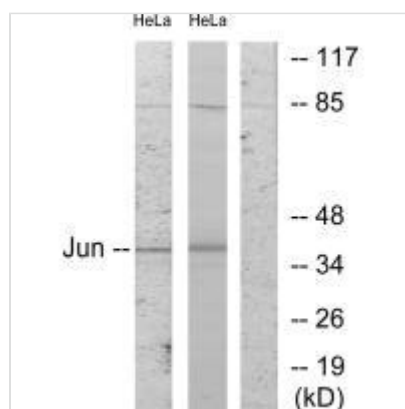




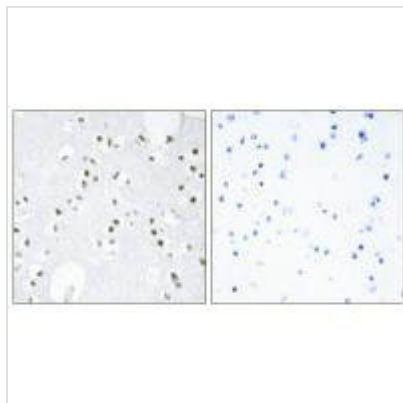
JUN (Ab-243) Antibody

Product Code	CSB-PA790730
Storage	Upon receipt, store at -20°C or -80°C. Avoid repeated freeze.
Uniprot No.	P05412
Immunogen	Synthesized non-phosphopeptide derived from Human c-Jun around the phosphorylation site of serine 243.
Raised In	Rabbit
Species Reactivity	Human,Mouse,Rat
Specificity	The antibody detects endogenous levels of total c-Jun protein.
Tested Applications	ELISA,WB,IHC;WB:1:500-1:3000,IHC:1:50-1:100
Form	Rabbit IgG in phosphate buffered saline (without Mg ²⁺ and Ca ²⁺), pH 7.4, 150mM NaCl, 0.02% sodium azide and 50% glycerol.
Purification Method	The antibody was affinity-purified from rabbit antiserum by affinity-chromatography using epitope-specific immunogen.
Clonality	Polyclonal
Alias	Activator protein 1; AH119; AP-1; AP1; c-Jun
Product Type	Polyclonal Antibody
Immunogen Species	Homo sapiens (Human)
Target Names	JUN

Image



Western blot analysis of extracts from HeLa cells, using c-Jun (Ab-243) antibody.



Immunohistochemistry analysis of paraffin-embedded human brain tissue, using c-Jun (Ab-243) antibody.