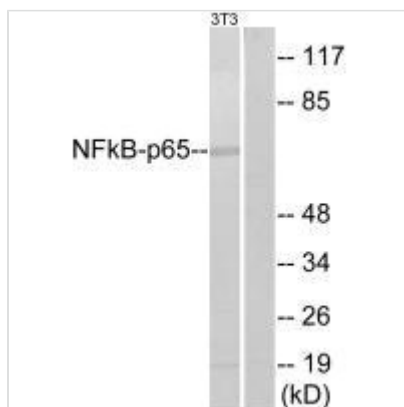




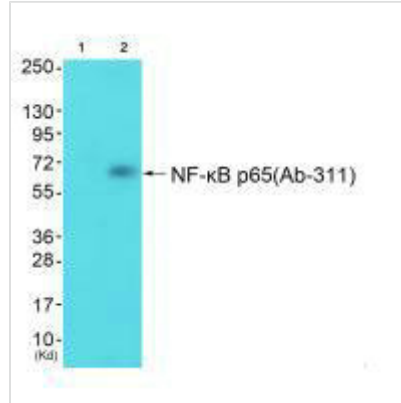
RELA (Ab-311) Antibody

Product Code	CSB-PA128086
Storage	Upon receipt, store at -20°C or -80°C. Avoid repeated freeze.
Uniprot No.	Q04206
Immunogen	Synthesized non-phosphopeptide derived from Human NF-κB p65 around the phosphorylation site of serine 311 (F-K-S(p)-I-M).
Raised In	Rabbit
Species Reactivity	Human,Mouse,Rat
Specificity	The antibody detects endogenous levels of total NF-κB p65 protein.
Tested Applications	ELISA,WB;WB:1:500-1:3000
Form	Rabbit IgG in phosphate buffered saline (without Mg ²⁺ and Ca ²⁺), pH 7.4, 150mM NaCl, 0.02% sodium azide and 50% glycerol.
Purification Method	The antibody was affinity-purified from rabbit antiserum by affinity-chromatography using epitope-specific immunogen.
Clonality	Polyclonal
Alias	NFKB3; Nuclear factor NF-kappa-B p65 subunit; RELA; TF65; Transcription factor p65
Product Type	Polyclonal Antibody
Immunogen Species	Homo sapiens (Human)
Target Names	RELA

Image



Western blot analysis of extracts from NIH-3T3, using NF-kappaB p65 (Ab-311) antibody.



Western blot analysis of extracts from cos-7 cells (Lane 2), using NF- κ B p65 (Ab-311) antibody. The lane on the left is treated with synthesized peptide.

Usage

For Research Use Only. Not for use in diagnostic or therapeutic procedures.