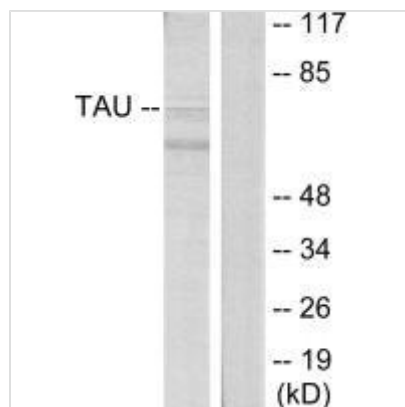




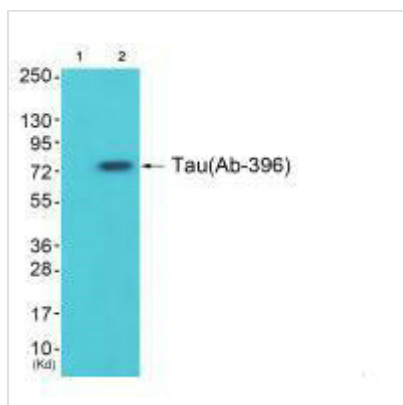
MAPT (Ab-396) Antibody

| | |
|----------------------------|--|
| Product Code | CSB-PA904096 |
| Storage | Upon receipt, store at -20°C or -80°C. Avoid repeated freeze. |
| Uniprot No. | P10636 |
| Immunogen | Synthesized non-phosphopeptide derived from Human Tau around the phosphorylation site of Serine 396. |
| Raised In | Rabbit |
| Species Reactivity | Human,Mouse,Rat |
| Specificity | The antibody detects endogenous levels of Tau protein around Serine 396. |
| Tested Applications | ELISA,WB;WB:1:500-1:3000 |
| Form | Rabbit IgG in phosphate buffered saline (without Mg ²⁺ and Ca ²⁺), pH 7.4, 150mM NaCl, 0.02% sodium azide and 50% glycerol. |
| Purification Method | The antibody was affinity-purified from rabbit antiserum by affinity-chromatography using epitope-specific immunogen. |
| Clonality | Polyclonal |
| Alias | MAPT; Microtubule-associated protein tau; MTBT1; Neurofibrillary tangle protein; Paired helical filament-tau |
| Product Type | Polyclonal Antibody |
| Immunogen Species | Homo sapiens (Human) |
| Target Names | MAPT |

Image



Western blot analysis of extracts from HeLa cells, using Tau (Ab-396) antibody.



Western blot analysis of extracts from 293 cells (Lane 2), using Tau (Ab-396) antibody. The lane on the left is treated with synthesized peptide.