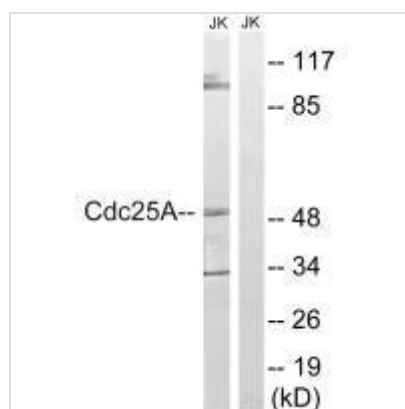




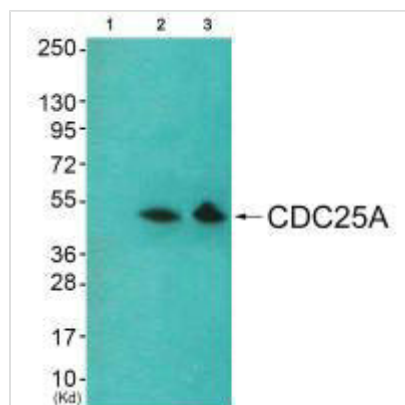
CDC25A (Ab-178) Antibody

Product Code	CSB-PA442041
Storage	Upon receipt, store at -20°C or -80°C. Avoid repeated freeze.
Uniprot No.	P30304
Immunogen	Synthesized non-phosphopeptide derived from Human CDC25A around the phosphorylation site of serine 178 (Q-N-S(p)-A-P).
Raised In	Rabbit
Species Reactivity	Human
Specificity	The antibody detects endogenous levels of total CDC25A protein.
Tested Applications	ELISA, WB; WB: 1:500-1:3000
Form	Rabbit IgG in phosphate buffered saline (without Mg ²⁺ and Ca ²⁺), pH 7.4, 150mM NaCl, 0.02% sodium azide and 50% glycerol.
Purification Method	The antibody was affinity-purified from rabbit antiserum by affinity-chromatography using epitope-specific immunogen.
Clonality	Polyclonal
Alias	CDC25M3; Dual specificity phosphatase Cdc25A; EC 3.1.3.48; M-phase inducer phosphatase 1; MPIP1
Product Type	Polyclonal Antibody
Immunogen Species	Homo sapiens (Human)
Target Names	CDC25A

Image



Western blot analysis of extracts from Jurkat cells, using CDC25A (Ab-178) antibody.



Western blot analysis of extracts from HeLa cells (Lane 2) and 293 cells (Lane 3), using CDC25A (Ab-178) antibody. The lane on the left is treated with synthesized peptide.