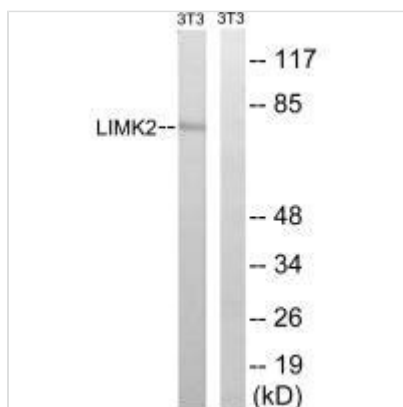




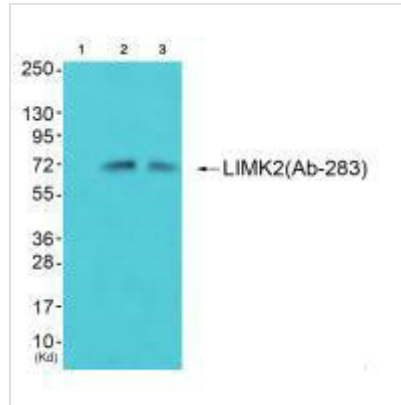
LIMK2 (Ab-283) Antibody

Product Code	CSB-PA903894
Storage	Upon receipt, store at -20°C or -80°C. Avoid repeated freeze.
Uniprot No.	P53671
Immunogen	Synthesized non-phosphopeptide derived from Human LIMK2 around the phosphorylation site of serine 283 (R-R-S(p)-L-R).
Raised In	Rabbit
Species Reactivity	Human, Mouse
Specificity	The antibody detects endogenous levels of total LIMK2 protein.
Tested Applications	ELISA, WB; WB: 1:500-1:3000
Form	Rabbit IgG in phosphate buffered saline (without Mg ²⁺ and Ca ²⁺), pH 7.4, 150mM NaCl, 0.02% sodium azide and 50% glycerol.
Purification Method	The antibody was affinity-purified from rabbit antiserum by affinity-chromatography using epitope-specific immunogen.
Clonality	Polyclonal
Alias	EC 2.7.11.1; kinase LIMK2; LIM domain kinase 2; LIMK-2;
Product Type	Polyclonal Antibody
Immunogen Species	Homo sapiens (Human)
Target Names	LIMK2

Image



Western blot analysis of extracts from 3T3 cells, treated with PMA (125ng/ml, 30mins), using LIMK2 (Ab-283) antibody.



Western blot analysis of extracts from 293 cells (Lane 2) and cos-7 cells (Lane 3), using LIMK2 (Ab-283) antibody. The lane on the left is treated with synthesized peptide.

Usage

For Research Use Only. Not for use in diagnostic or therapeutic procedures.