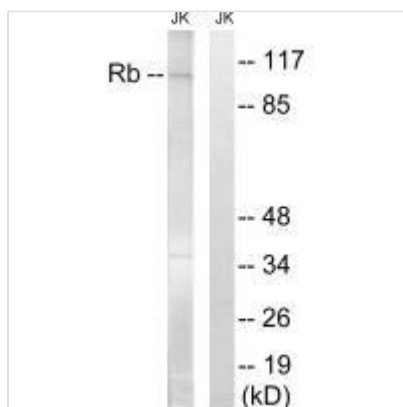




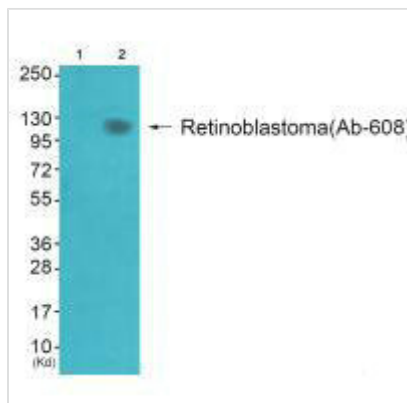
RB1 (Ab-608) Antibody

Product Code	CSB-PA036254
Storage	Upon receipt, store at -20°C or -80°C. Avoid repeated freeze.
Uniprot No.	P06400
Immunogen	Synthesized non-phosphopeptide derived from Human Retinoblastoma around the phosphorylation site of serine 608 (Y-L-S(p)-P-V).
Raised In	Rabbit
Species Reactivity	Human, Mouse
Specificity	The antibody detects endogenous levels of total Retinoblastoma protein.
Tested Applications	ELISA, WB; WB: 1:500-1:3000
Form	Rabbit IgG in phosphate buffered saline (without Mg ²⁺ and Ca ²⁺), pH 7.4, 150mM NaCl, 0.02% sodium azide and 50% glycerol.
Purification Method	The antibody was affinity-purified from rabbit antiserum by affinity-chromatography using epitope-specific immunogen.
Clonality	Polyclonal
Alias	P105-RB; PP105; PP110; RB-1; RB1
Product Type	Polyclonal Antibody
Immunogen Species	Homo sapiens (Human)
Target Names	RB1

Image



Western blot analysis of extracts from Jurkat cells, treated with PMA (125ng/ml, 30mins), using Retinoblastoma (Ab-608) antibody.



Western blot analysis of extracts from JK cells (Lane 2), using Retinoblastoma (Ab-608) antibody. The lane on the left is treated with synthesized peptide.

Usage

For Research Use Only. Not for use in diagnostic or therapeutic procedures.