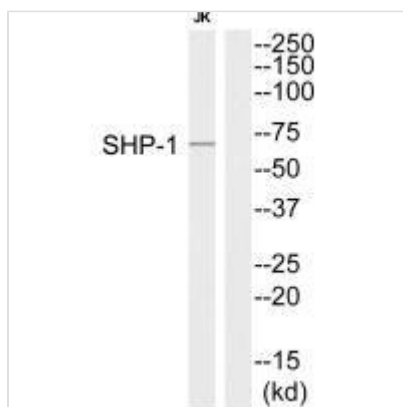




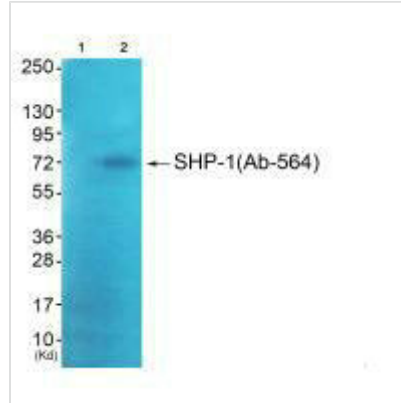
RPS6KA5 (Ab-564) Antibody

Product Code	CSB-PA262751
Storage	Upon receipt, store at -20°C or -80°C. Avoid repeated freeze.
Uniprot No.	O75582
Immunogen	Synthesized peptide derived from C-terminal of Human SHP-1.
Raised In	Rabbit
Species Reactivity	Human
Specificity	The antibody detects endogenous levels of total SHP-1 protein.
Tested Applications	ELISA, WB; WB: 1:500-1:3000
Form	Rabbit IgG in phosphate buffered saline (without Mg ²⁺ and Ca ²⁺), pH 7.4, 150mM NaCl, 0.02% sodium azide and 50% glycerol.
Purification Method	The antibody was affinity-purified from rabbit antiserum by affinity-chromatography using epitope-specific immunogen.
Clonality	Polyclonal
Alias	HCP; HCPH; hematopoietic cell phosphatase; Hematopoietic cell protein-tyrosine phosphatase; HPTP1C
Product Type	Polyclonal Antibody
Immunogen Species	Homo sapiens (Human)
Target Names	RPS6KA5

Image



Western blot analysis of extracts from Jurkat cells, using SHP-1 (Ab-564) antibody.



Western blot analysis of extracts from JK cells (Lane 2), using SHP-1 (Ab-564) antibody. The lane on the left is treated with synthesized peptide.

Usage

For Research Use Only. Not for use in diagnostic or therapeutic procedures.