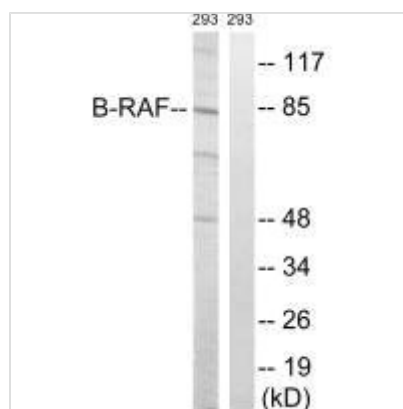




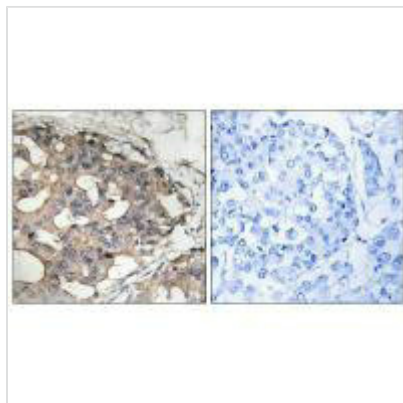
# BRAF (Ab-446) Antibody

<b>Product Code</b>	CSB-PA134950
<b>Storage</b>	Upon receipt, store at -20°C or -80°C. Avoid repeated freeze.
<b>Uniprot No.</b>	P15056
<b>Immunogen</b>	Synthesized non-phosphopeptide derived from Human B-RAF around the phosphorylation site of serine 446 (R-D-S(p)-S-D).
<b>Raised In</b>	Rabbit
<b>Species Reactivity</b>	Human,Mouse
<b>Specificity</b>	The antibody detects endogenous levels of total B-RAF protein.
<b>Tested Applications</b>	ELISA,WB,IHC;WB:1:500-1:3000,IHC:1:50-1:100
<b>Form</b>	Rabbit IgG in phosphate buffered saline (without Mg <sup>2+</sup> and Ca <sup>2+</sup> ), pH 7.4, 150mM NaCl, 0.02% sodium azide and 50% glycerol.
<b>Purification Method</b>	The antibody was affinity-purified from rabbit antiserum by affinity-chromatography using epitope-specific immunogen.
<b>Clonality</b>	Polyclonal
<b>Alias</b>	B-RAF; B-RAF proto-oncogene serine/threonine-protein kinase; B-Raf proto-oncogene serine/threonine-protein kinase; BRAF; BRAF1
<b>Product Type</b>	Polyclonal Antibody
<b>Immunogen Species</b>	Homo sapiens (Human)
<b>Target Names</b>	BRAF

## Image



Western blot analysis of extracts from 293 cells, treated with insulin (0.01U/ml, 15mins), using B-RAF (Ab-446) antibody.



Immunohistochemistry analysis of paraffin-embedded human breast carcinoma tissue using B-RAF (Ab-446) antibody.

## Usage

For Research Use Only. Not for use in diagnostic or therapeutic procedures.