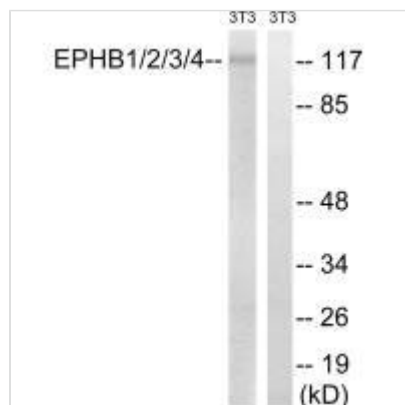




EPHB1/EPHB2/EPHB3/EPHB4 (Ab-600/602/614/596) Antibody

Product Code	CSB-PA249052
Storage	Upon receipt, store at -20°C or -80°C. Avoid repeated freeze.
Uniprot No.	P54762
Immunogen	Synthesized non-phosphopeptide derived from Human EPHB1/2/3/4 around the phosphorylation site of tyrosine 600/602/614/596 (F-T-Y(p)-E-D).
Raised In	Rabbit
Species Reactivity	Human,Mouse
Specificity	The antibody detects endogenous levels of total EPHB1/2/3/4 protein.
Tested Applications	ELISA,WB;WB:1:500-1:3000
Form	Rabbit IgG in phosphate buffered saline (without Mg ²⁺ and Ca ²⁺), pH 7.4, 150mM NaCl, 0.02% sodium azide and 50% glycerol.
Purification Method	The antibody was affinity-purified from rabbit antiserum by affinity-chromatography using epitope-specific immunogen.
Clonality	Polyclonal
Alias	EC 2.7.10.1; ELK; EPB1; Eph receptor B1; Ephrin type-B receptor 1 precursor
Product Type	Polyclonal Antibody
Immunogen Species	Homo sapiens (Human)
Target Names	EPHB1/EPHB2/EPHB3/EPHB4

Image



Western blot analysis of extracts from 3T3 cells, treated with heat shock, using EPHB1/2/3/4 (Ab-600/602/614/596) antibody.

Usage

For Research Use Only. Not for use in diagnostic or therapeutic procedures.