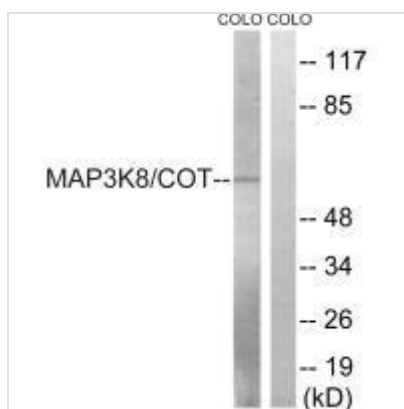




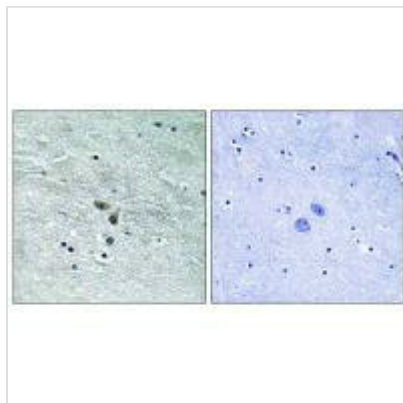
MAP3K8 (Ab-400) Antibody

Product Code	CSB-PA901361
Storage	Upon receipt, store at -20°C or -80°C. Avoid repeated freeze.
Uniprot No.	P41279
Immunogen	Synthesized non-phosphopeptide derived from Human MAP3K8 around the phosphorylation site of serine 400 (C-Q-S(p)-L-D).
Raised In	Rabbit
Species Reactivity	Human,Mouse
Specificity	The antibody detects endogenous levels of total MAP3K8 protein.
Tested Applications	ELISA,WB,IHC;WB:1:500-1:3000,IHC:1:50-1:100
Form	Rabbit IgG in phosphate buffered saline (without Mg ²⁺ and Ca ²⁺), pH 7.4, 150mM NaCl, 0.02% sodium azide and 50% glycerol.
Purification Method	The antibody was affinity-purified from rabbit antiserum by affinity-chromatography using epitope-specific immunogen.
Clonality	Polyclonal
Alias	C-COT; cancer Osaka thyroid oncogene; COT proto-oncogene serine/threonine-protein kinase; EC 2.7.11.25; kinase Cot
Product Type	Polyclonal Antibody
Immunogen Species	Homo sapiens (Human)
Target Names	MAP3K8

Image



Western blot analysis of extracts from COLO cells, treated with Insulin (0.01U/ml, 15mins), using MAP3K8 (Ab-400) antibody.



Immunohistochemistry analysis of paraffin-embedded human brain tissue using MAP3K8 (Ab-400) antibody.

Usage

For Research Use Only. Not for use in diagnostic or therapeutic procedures.