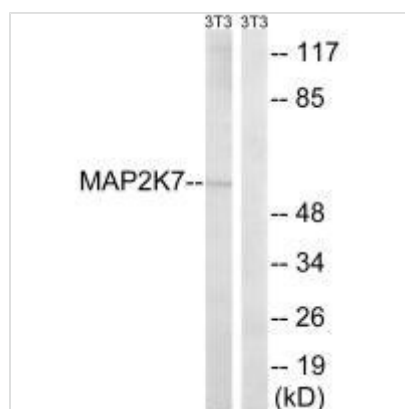




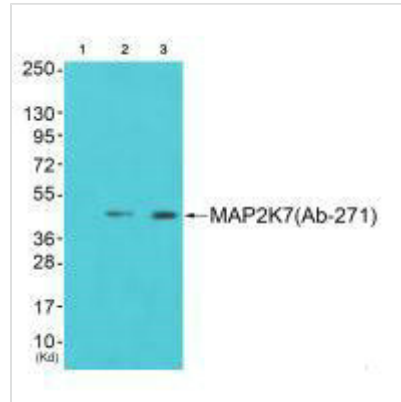
MAP3K7 (Ab-271) Antibody

Product Code	CSB-PA206068
Storage	Upon receipt, store at -20°C or -80°C. Avoid repeated freeze.
Uniprot No.	O43318
Immunogen	Synthesized non-phosphopeptide derived from Human MAP2K7 around the phosphorylation site of serine 271 (V-D-S(p)-K-A).
Raised In	Rabbit
Species Reactivity	Human, Mouse
Specificity	The antibody detects endogenous levels of total MAP2K7 protein.
Tested Applications	ELISA, WB; WB: 1:500-1:3000
Form	Rabbit IgG in phosphate buffered saline (without Mg ²⁺ and Ca ²⁺), pH 7.4, 150mM NaCl, 0.02% sodium azide and 50% glycerol.
Purification Method	The antibody was affinity-purified from rabbit antiserum by affinity-chromatography using epitope-specific immunogen.
Clonality	Polyclonal
Alias	EC 2.7.11.25; kinase TAK1; M3K7; MAP3K7; Mitogen-activated protein kinase kinase kinase 7
Product Type	Polyclonal Antibody
Immunogen Species	Homo sapiens (Human)
Target Names	MAP3K7

Image



Western blot analysis of extracts from HeLa cells, using MAP2K7 (Ab-271) antibody.



Western blot analysis of extracts from 293 cells (Lane 2) and cos-7 cells (Lane 3), using MAP2K7 (Ab-271) antibody. The lane on the left is treated with synthesized peptide.

Usage

For Research Use Only. Not for use in diagnostic or therapeutic procedures.