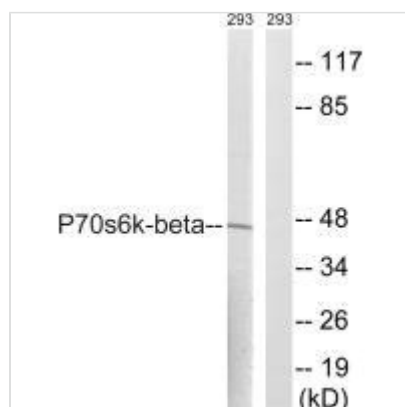




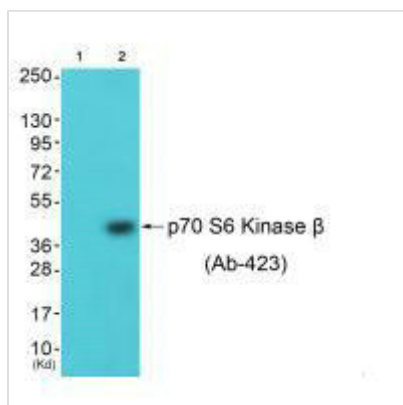
# RPS6KB2 (Ab-423) Antibody

<b>Product Code</b>	CSB-PA830536
<b>Storage</b>	Upon receipt, store at -20°C or -80°C. Avoid repeated freeze.
<b>Uniprot No.</b>	Q9UBS0
<b>Immunogen</b>	Synthesized non-phosphopeptide derived from Human p70 S6 Kinase $\beta$ around the phosphorylation site of serine 423 (P-V-S(p)-P-L).
<b>Raised In</b>	Rabbit
<b>Species Reactivity</b>	Human, Mouse
<b>Specificity</b>	The antibody detects endogenous levels of total p70 S6 Kinase $\beta$ protein.
<b>Tested Applications</b>	ELISA, WB; WB: 1:500-1:3000
<b>Form</b>	Rabbit IgG in phosphate buffered saline (without $Mg^{2+}$ and $Ca^{2+}$ ), pH 7.4, 150mM NaCl, 0.02% sodium azide and 50% glycerol.
<b>Purification Method</b>	The antibody was affinity-purified from rabbit antiserum by affinity-chromatography using epitope-specific immunogen.
<b>Clonality</b>	Polyclonal
<b>Alias</b>	14 beta; 70 kDa ribosomal protein S6 kinase 2; EC 2.7.11.1; kinase p70S6K-beta; KS6B2
<b>Product Type</b>	Polyclonal Antibody
<b>Immunogen Species</b>	Homo sapiens (Human)
<b>Target Names</b>	RPS6KB2

## Image



Western blot analysis of extracts from 293 cells, using p70 S6 Kinase  $\beta$  (Ab-423) antibody.



Western blot analysis of extracts from 3T3 cells (Lane 2), using p70 S6 Kinase  $\beta$  (Ab-423) antibody. The lane on the left is treated with synthesized peptide.