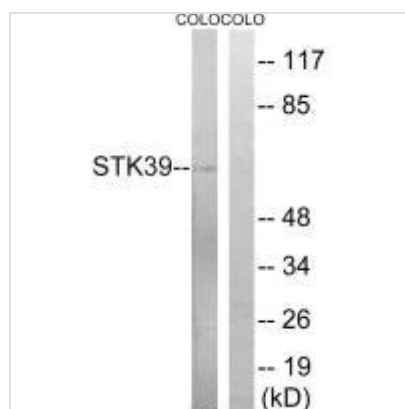




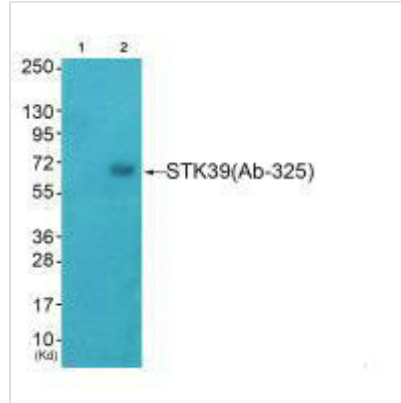
STK39 (Ab-325) Antibody

| | |
|----------------------------|--|
| Product Code | CSB-PA776395 |
| Storage | Upon receipt, store at -20°C or -80°C. Avoid repeated freeze. |
| Uniprot No. | Q9UEW8 |
| Immunogen | Synthesized non-phosphopeptide derived from Human STK39 around the phosphorylation site of serine 325 (D-P-S(p)-K-R). |
| Raised In | Rabbit |
| Species Reactivity | Human, Mouse |
| Specificity | The antibody detects endogenous levels of total STK39 protein. |
| Tested Applications | ELISA, WB; WB: 1:500-1:3000 |
| Form | Rabbit IgG in phosphate buffered saline (without Mg ²⁺ and Ca ²⁺), pH 7.4, 150mM NaCl, 0.02% sodium azide and 50% glycerol. |
| Purification Method | The antibody was affinity-purified from rabbit antiserum by affinity-chromatography using epitope-specific immunogen. |
| Clonality | Polyclonal |
| Alias | DCHT; EC 2.7.11.1; Serine/threonine-protein kinase 39; SPAK; Ste-20 related kinase |
| Product Type | Polyclonal Antibody |
| Immunogen Species | Homo sapiens (Human) |
| Target Names | STK39 |

Image



Western blot analysis of extracts from COLO cells, using STK39 (Ab-325) antibody.



Western blot analysis of extracts from HeLa cells (Lane 2), using STK39 (Ab-325) antibody. The lane on the left is treated with synthesized peptide.

Usage

For Research Use Only. Not for use in diagnostic or therapeutic procedures.