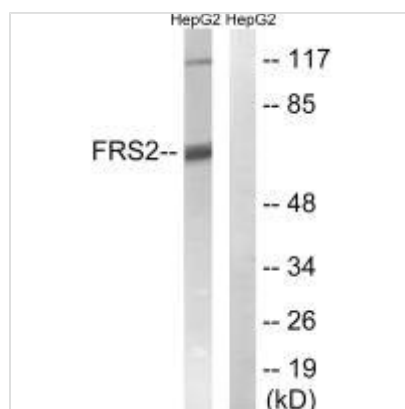




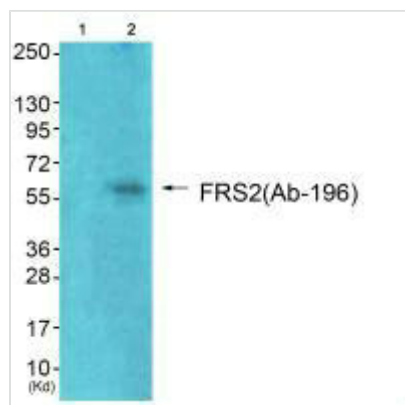
# FRS2 (Ab-196) Antibody

<b>Product Code</b>	CSB-PA208276
<b>Storage</b>	Upon receipt, store at -20°C or -80°C. Avoid repeated freeze.
<b>Uniprot No.</b>	Q8WU20
<b>Immunogen</b>	Synthesized non-phosphopeptide derived from Human FRS2 around the phosphorylation site of tyrosine 196 (H-T-Y(p)-V-N).
<b>Raised In</b>	Rabbit
<b>Species Reactivity</b>	Human, Mouse
<b>Specificity</b>	The antibody detects endogenous levels of total FRS2 protein.
<b>Tested Applications</b>	ELISA, WB; WB: 1:500-1:3000
<b>Form</b>	Rabbit IgG in phosphate buffered saline (without Mg <sup>2+</sup> and Ca <sup>2+</sup> ), pH 7.4, 150mM NaCl, 0.02% sodium azide and 50% glycerol.
<b>Purification Method</b>	The antibody was affinity-purified from rabbit antiserum by affinity-chromatography using epitope-specific immunogen.
<b>Clonality</b>	Polyclonal
<b>Alias</b>	FGFR signalling adaptor; FGFR signalling adaptor SNT-1; SNT-1; SNT2; SUC1-associated neurotrophic factor target
<b>Product Type</b>	Polyclonal Antibody
<b>Immunogen Species</b>	Homo sapiens (Human)
<b>Target Names</b>	FRS2

## Image



Western blot analysis of extracts from HepG2 cells, using FRS2 (Ab-196) antibody.



Western blot analysis of extracts from 293 cells (Lane 2), using FRS2 (Ab-196) antibody. The lane on the left is treated with synthesized peptide.

## Usage

For Research Use Only. Not for use in diagnostic or therapeutic procedures.