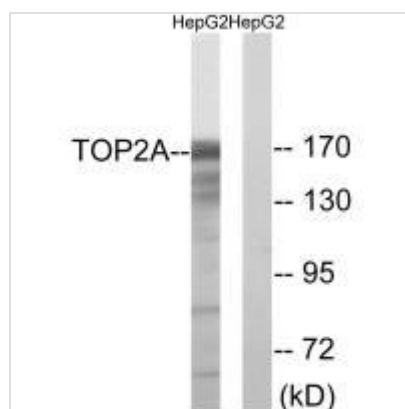




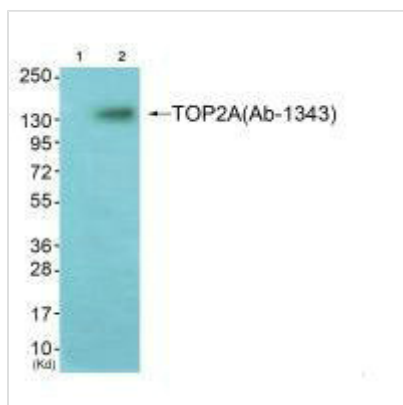
TOP2A (Ab-1343) Antibody

Product Code	CSB-PA438319
Storage	Upon receipt, store at -20°C or -80°C. Avoid repeated freeze.
Uniprot No.	P11388
Immunogen	Synthesized non-phosphopeptide derived from Human TOP2A around the phosphorylation site of threonine 1343 (E-K-T(p)-D-D).
Raised In	Rabbit
Species Reactivity	Human
Specificity	The antibody detects endogenous levels of total TOP2A protein.
Tested Applications	ELISA, WB; WB: 1:500-1:3000
Form	Rabbit IgG in phosphate buffered saline (without Mg ²⁺ and Ca ²⁺), pH 7.4, 150mM NaCl, 0.02% sodium azide and 50% glycerol.
Purification Method	The antibody was affinity-purified from rabbit antiserum by affinity-chromatography using epitope-specific immunogen.
Clonality	Polyclonal
Alias	alpha isozyme; DNA topoisomerase II; DNA topoisomerase II-alpha; P11388-1; TOP-2
Product Type	Polyclonal Antibody
Immunogen Species	Homo sapiens (Human)
Target Names	TOP2A

Image



Western blot analysis of extracts from HepG2 cells, using TOP2A (Ab-1343) antibody.



Western blot analysis of extracts from K562 cells (Lane 2), using TOP2A (Ab-1343) antibody. The lane on the left is treated with synthesized peptide.