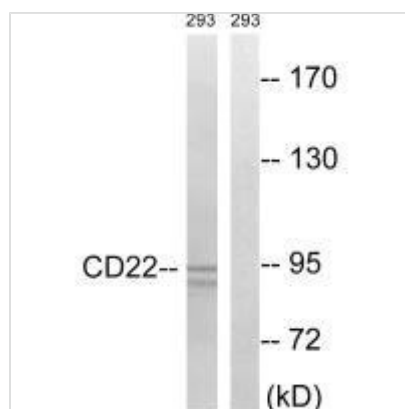




CD22 (Ab-807) Antibody

Product Code	CSB-PA953915
Storage	Upon receipt, store at -20°C or -80°C. Avoid repeated freeze.
Uniprot No.	P20273
Immunogen	Synthesized non-phosphopeptide derived from Human BL-CAM around the phosphorylation site of tyrosine 807 (G-D-Y(p)-E-N).
Raised In	Rabbit
Species Reactivity	Human
Specificity	The antibody detects endogenous levels of total BL-CAM protein.
Tested Applications	ELISA, WB; WB: 1:500-1:3000
Form	Rabbit IgG in phosphate buffered saline (without Mg ²⁺ and Ca ²⁺), pH 7.4, 150mM NaCl, 0.02% sodium azide and 50% glycerol.
Purification Method	The antibody was affinity-purified from rabbit antiserum by affinity-chromatography using epitope-specific immunogen.
Clonality	Polyclonal
Alias	B-cell receptor CD22; B-lymphocyte cell adhesion molecule; BL-CAM; Leu-14; Siglec-2
Product Type	Polyclonal Antibody
Immunogen Species	Homo sapiens (Human)
Target Names	CD22

Image



Western blot analysis of extracts from 293 cells, treated with Ca²⁺ (40nM, 40mins), using BL-CAM (Ab-807) antibody.