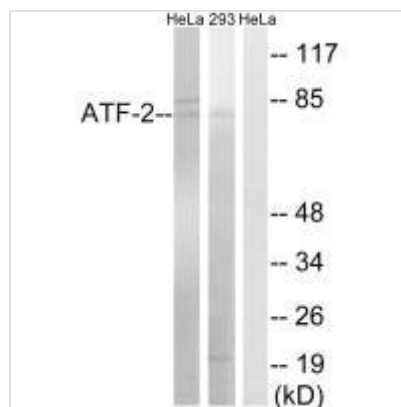




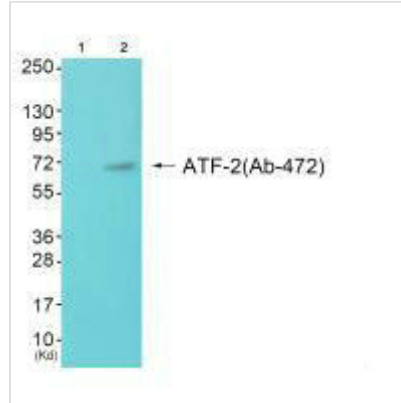
ATF2 (Ab-472) Antibody

Product Code	CSB-PA557506
Storage	Upon receipt, store at -20°C or -80°C. Avoid repeated freeze.
Uniprot No.	P15336
Immunogen	Synthesized non-phosphopeptide derived from Human ATF-2 around the phosphorylation site of serine 472 (A-L-S(p)-Q-I).
Raised In	Rabbit
Species Reactivity	Human, Mouse
Specificity	The antibody detects endogenous levels of total ATF-2 protein.
Tested Applications	ELISA, WB; WB: 1:500-1:3000
Form	Rabbit IgG in phosphate buffered saline (without Mg ²⁺ and Ca ²⁺), pH 7.4, 150mM NaCl, 0.02% sodium azide and 50% glycerol.
Purification Method	The antibody was affinity-purified from rabbit antiserum by affinity-chromatography using epitope-specific immunogen.
Clonality	Polyclonal
Alias	Activating 2; ATF2; cAMP response element binding protein CRE- BP1; CREB2; CREBP1
Product Type	Polyclonal Antibody
Immunogen Species	Homo sapiens (Human)
Target Names	ATF2

Image



Western blot analysis of extracts from HeLa cells and 293 cells, using ATF-2 (Ab-472) antibody.



Western blot analysis of extracts from JK cells (Lane 2), using ATF-2 (Ab-472) antibody. The lane on the left is treated with synthesized peptide

Usage

For Research Use Only. Not for use in diagnostic or therapeutic procedures.