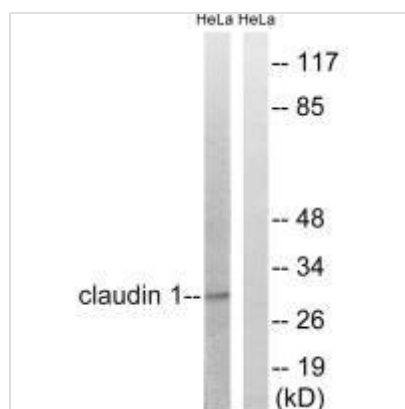




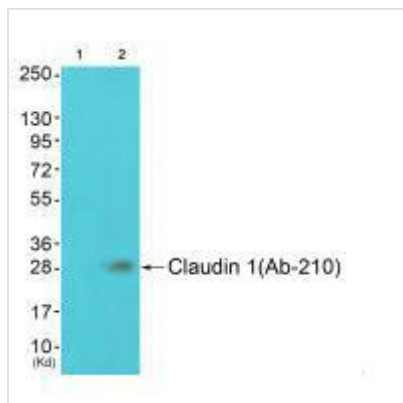
CLDN1 (Ab-210) Antibody

Product Code	CSB-PA133727
Storage	Upon receipt, store at -20°C or -80°C. Avoid repeated freeze.
Uniprot No.	O95832
Immunogen	Synthesized non-phosphopeptide derived from Human Claudin 1 around the phosphorylation site of tyrosine 210 (G-K-D-Y(p)-V).
Raised In	Rabbit
Species Reactivity	Human,Mouse
Specificity	The antibody detects endogenous levels of total Claudin 1 protein.
Tested Applications	ELISA,WB;WB:1:500-1:3000
Form	Rabbit IgG in phosphate buffered saline (without Mg ²⁺ and Ca ²⁺), pH 7.4, 150mM NaCl, 0.02% sodium azide and 50% glycerol.
Purification Method	The antibody was affinity-purified from rabbit antiserum by affinity-chromatography using epitope-specific immunogen.
Clonality	Polyclonal
Alias	CLD1; CLDN1; SEMP1; Senescence-associated epithelial membrane protein; UNQ481/PRO944
Product Type	Polyclonal Antibody
Immunogen Species	Homo sapiens (Human)
Target Names	CLDN1

Image



Western blot analysis of extracts from HeLa cells, treated with Hu (2nM, 24hours), using Claudin 1 (Ab-210) antibody.



Western blot analysis of extracts from JK cells (Lane 2), using Claudin 1 (Ab-210) antibody. The lane on the left is treated with synthesized peptide.

Usage

For Research Use Only. Not for use in diagnostic or therapeutic procedures.