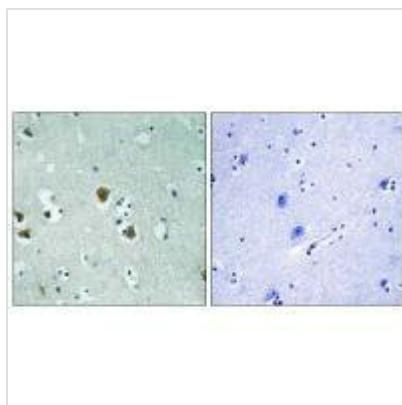




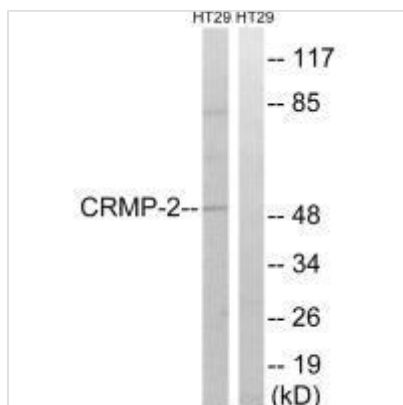
DPYSL2 (Ab-509) Antibody

Product Code	CSB-PA140800
Storage	Upon receipt, store at -20°C or -80°C. Avoid repeated freeze.
Uniprot No.	Q16555
Immunogen	Synthesized non-phosphopeptide derived from Human CRMP-2 around the phosphorylation site of threonine 509 (S-V-T(p)-P-K).
Raised In	Rabbit
Species Reactivity	Human,Mouse
Specificity	The antibody detects endogenous levels of total CRMP-2 protein.
Tested Applications	ELISA,WB,IHC;WB:1:500-1:3000,IHC:1:50-1:100
Form	Rabbit IgG in phosphate buffered saline (without Mg ²⁺ and Ca ²⁺), pH 7.4, 150mM NaCl, 0.02% sodium azide and 50% glycerol.
Purification Method	The antibody was affinity-purified from rabbit antiserum by affinity-chromatography using epitope-specific immunogen.
Clonality	Polyclonal
Alias	Collapsin response mediator protein 2; CRMP2; Dihydropyrimidinase related protein-2; DPYL2; DPYSL2
Product Type	Polyclonal Antibody
Immunogen Species	Homo sapiens (Human)
Target Names	DPYSL2

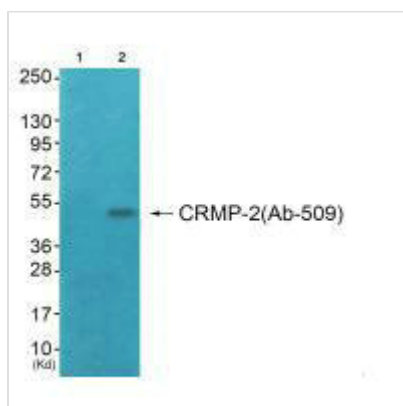
Image



Immunohistochemistry analysis of paraffin-embedded human brain tissue using CRMP-2 (Ab-509) antibody.



Western blot analysis of extracts from HT-29 cells, treated with heat shock, using CRMP-2 (Ab-509) antibody.



Western blot analysis of extracts from COS7 cells (Lane 2), using CRMP-2 (Ab-509) antibody. The lane on the left is treated with synthesized peptide.