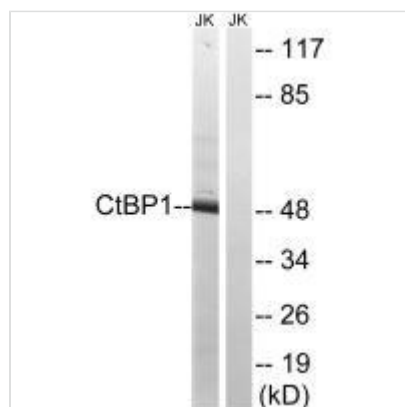




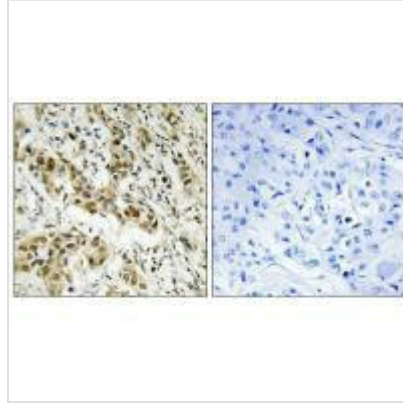
CTBP1 (Ab-422) Antibody

Product Code	CSB-PA278105
Storage	Upon receipt, store at -20°C or -80°C. Avoid repeated freeze.
Uniprot No.	Q13363
Immunogen	Synthesized non-phosphopeptide derived from Human CtBP1 around the phosphorylation site of serine 422 (A-P-S(p)-P-G).
Raised In	Rabbit
Species Reactivity	Human,Mouse
Specificity	The antibody detects endogenous levels of total CtBP1 protein.
Tested Applications	ELISA,WB,IHC;WB:1:500-1:3000,IHC:1:50-1:100
Form	Rabbit IgG in phosphate buffered saline (without Mg ²⁺ and Ca ²⁺), pH 7.4, 150mM NaCl, 0.02% sodium azide and 50% glycerol.
Purification Method	The antibody was affinity-purified from rabbit antiserum by affinity-chromatography using epitope-specific immunogen.
Clonality	Polyclonal
Alias	C-terminal binding protein 1; CTBP; EC 1.1.1.-;
Product Type	Polyclonal Antibody
Immunogen Species	Homo sapiens (Human)
Target Names	CTBP1

Image



Western blot analysis of extracts from Jurkat cells, using CtBP1 (Ab-422) antibody.



Immunohistochemistry analysis of paraffin-embedded human breast carcinoma tissue using CtBP1 (Ab-422) antibody.

Usage

For Research Use Only. Not for use in diagnostic or therapeutic procedures.