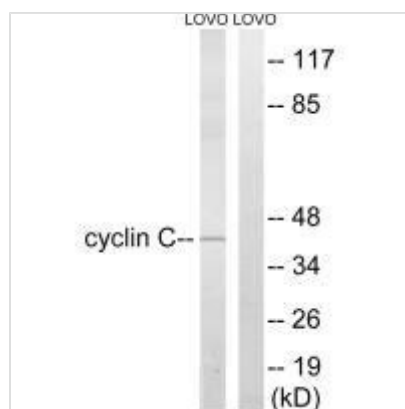




CCNC (Ab-275) Antibody

Product Code	CSB-PA182650
Storage	Upon receipt, store at -20°C or -80°C. Avoid repeated freeze.
Uniprot No.	P24863
Immunogen	Synthesized non-phosphopeptide derived from Human Cyclin C around the phosphorylation site of serine 275 (N-G-S(p)-Q-N).
Raised In	Rabbit
Species Reactivity	Human, Mouse
Specificity	The antibody detects endogenous levels of total Cyclin C protein.
Tested Applications	ELISA, WB; WB: 1:500-1:3000
Form	Rabbit IgG in phosphate buffered saline (without Mg ²⁺ and Ca ²⁺), pH 7.4, 150mM NaCl, 0.02% sodium azide and 50% glycerol.
Purification Method	The antibody was affinity-purified from rabbit antiserum by affinity-chromatography using epitope-specific immunogen.
Clonality	Polyclonal
Alias	The antiserum was produced against synthesized peptide derived from human Cyclin C.;
Product Type	Polyclonal Antibody
Immunogen Species	Homo sapiens (Human)
Target Names	CCNC

Image



Western blot analysis of extracts from LOVO cells, using Cyclin C (Ab-275) antibody.

Usage For Research Use Only. Not for use in diagnostic or therapeutic procedures.