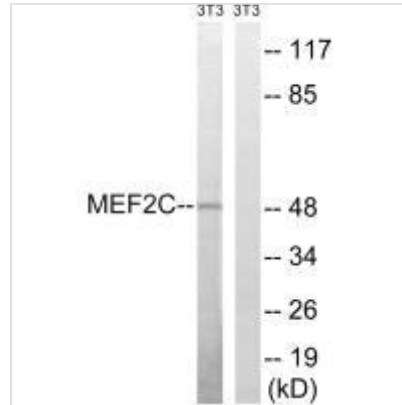


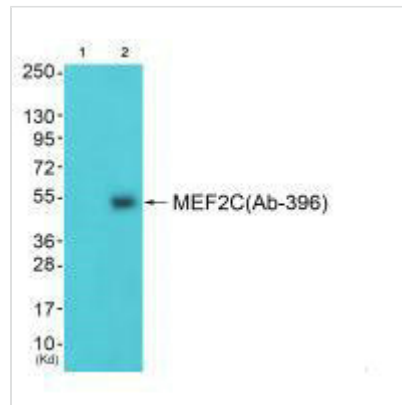


MEF2C (Ab-396) Antibody

Product Code	CSB-PA961556
Storage	Upon receipt, store at -20°C or -80°C. Avoid repeated freeze.
Uniprot No.	Q06413
Immunogen	Synthesized non-phosphopeptide derived from Human MEF2C around the phosphorylation site of serine 396 (P-V-S(p)-P-P).
Raised In	Rabbit
Species Reactivity	Human, Mouse
Specificity	The antibody detects endogenous levels of total MEF2C protein.
Tested Applications	ELISA, WB; WB: 1:500-1:3000
Relevance	<p>Transcription activator which binds specifically to the MEF2 element present in the regulatory regions of many muscle-specific genes. Controls cardiac morphogenesis and myogenesis, and is also involved in vascular development. Plays an essential role in hippocampal-dependent learning and memory by suppressing the number of excitatory synapses and thus regulating basal and evoked synaptic transmission. Crucial for normal neuronal development, distribution, and electrical activity in the neocortex. Necessary for proper development of megakaryocytes and platelets and for bone marrow B-lymphopoiesis. Required for B-cell survival and proliferation in response to BCR stimulation, efficient IgG1 antibody responses to T-cell-dependent antigens and for normal induction of germinal center B-cells. May also be involved in neurogenesis and in the development of cortical architecture. By similarity. Isoform 3 and isoform 4, which lack the repressor domain, are more active than isoform 1 and isoform 2.</p> <p>Leifer D., Proc. Natl. Acad. Sci. U.S.A. 90:1546-1550(1993). McDermott J.C., Mol. Cell. Biol. 13:2564-2577(1993). Wang A.H., Mol. Cell. Biol. 19:7816-7827(1999).</p>
Form	Rabbit IgG in phosphate buffered saline (without Mg ²⁺ and Ca ²⁺), pH 7.4, 150mM NaCl, 0.02% sodium azide and 50% glycerol.
Purification Method	The antibody was affinity-purified from rabbit antiserum by affinity-chromatography using epitope-specific immunogen.
Clonality	Polyclonal
Alias	Myocyte enhancer factor 2C; Myocyte-specific enhancer factor 2C; Similar to MADS box transcription enhancer factor 2 polypeptide C;
Product Type	Polyclonal Antibody
Species	Homo sapiens (Human)
Target Names	MEF2C
Image	



Western blot analysis of extracts from 3T3 cells, treated with starved (24hours), using MEF2C (Ab-396) antibody.



Western blot analysis of extracts from 3T3 cells (Lane 2), using MEF2C (Ab-396) antibody. The lane on the left is treated with synthesized peptide.