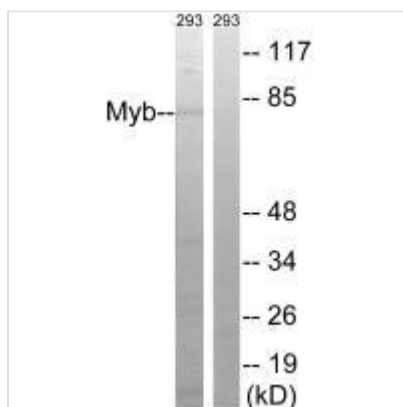




# MYB (Ab-532) Antibody

<b>Product Code</b>	CSB-PA199406
<b>Storage</b>	Upon receipt, store at -20°C or -80°C. Avoid repeated freeze.
<b>Uniprot No.</b>	P10242
<b>Immunogen</b>	Synthesized non-phosphopeptide derived from Human Myb around the phosphorylation site of serine 532 (V-E-S(p)-P-T).
<b>Raised In</b>	Rabbit
<b>Species Reactivity</b>	Human, Mouse
<b>Specificity</b>	The antibody detects endogenous levels of total Myb protein.
<b>Tested Applications</b>	ELISA, WB; WB: 1:500-1:3000
<b>Form</b>	Rabbit IgG in phosphate buffered saline (without Mg <sup>2+</sup> and Ca <sup>2+</sup> ), pH 7.4, 150mM NaCl, 0.02% sodium azide and 50% glycerol.
<b>Purification Method</b>	The antibody was affinity-purified from rabbit antiserum by affinity-chromatography using epitope-specific immunogen.
<b>Clonality</b>	Polyclonal
<b>Alias</b>	Myb proto-oncogene protein; C-myb;
<b>Product Type</b>	Polyclonal Antibody
<b>Immunogen Species</b>	Homo sapiens (Human)
<b>Target Names</b>	MYB

## Image



Western blot analysis of extracts from 293 cells, using Myb (Ab-532) antibody.

**Usage** For Research Use Only. Not for use in diagnostic or therapeutic procedures.