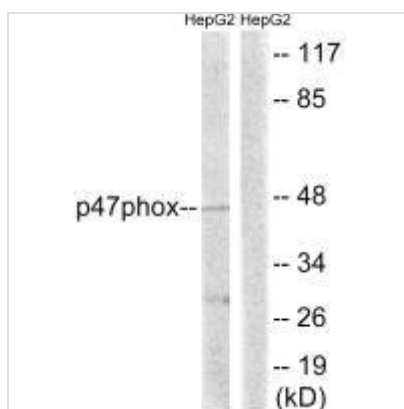




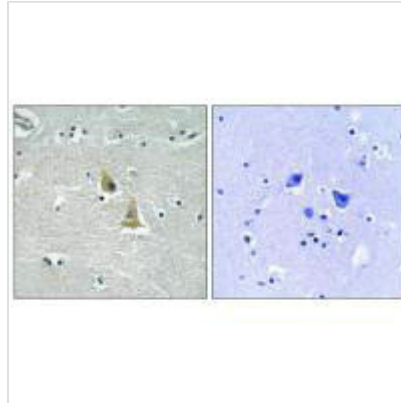
# NCF1 (Ab-345) Antibody

<b>Product Code</b>	CSB-PA933588
<b>Storage</b>	Upon receipt, store at -20°C or -80°C. Avoid repeated freeze.
<b>Uniprot No.</b>	P14598
<b>Immunogen</b>	Synthesized non-phosphopeptide derived from Human p47 phox around the phosphorylation site of serine 345 (P-Q-S(p)-P-G).
<b>Raised In</b>	Rabbit
<b>Species Reactivity</b>	Human
<b>Specificity</b>	The antibody detects endogenous levels of total p47 phox protein.
<b>Tested Applications</b>	ELISA,WB,IHC;WB:1:500-1:3000,IHC:1:50-1:100
<b>Form</b>	Rabbit IgG in phosphate buffered saline (without Mg <sup>2+</sup> and Ca <sup>2+</sup> ), pH 7.4, 150mM NaCl, 0.02% sodium azide and 50% glycerol.
<b>Purification Method</b>	The antibody was affinity-purified from rabbit antiserum by affinity-chromatography using epitope-specific immunogen.
<b>Clonality</b>	Polyclonal
<b>Alias</b>	47 kDa autosomal chronic granulomatous disease protein; 47 kDa neutrophil oxidase factor; NCF-1; NCF-47K; NCF1
<b>Product Type</b>	Polyclonal Antibody
<b>Immunogen Species</b>	Homo sapiens (Human)
<b>Target Names</b>	NCF1

## Image



Western blot analysis of extracts from HepG2 cells, treated with TNF (20ng/ml, 5mins), using p47 phox (Ab-345) antibody.



Immunohistochemistry analysis of paraffin-embedded human brain tissue using p47 phox (Ab-345) antibody.

**Usage**

For Research Use Only. Not for use in diagnostic or therapeutic procedures.