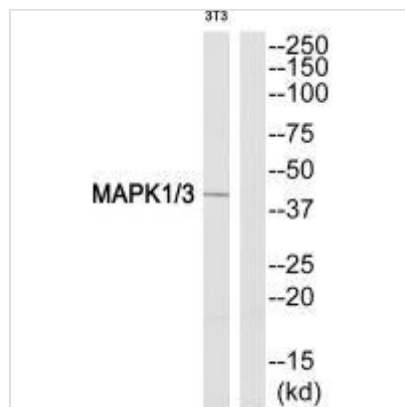




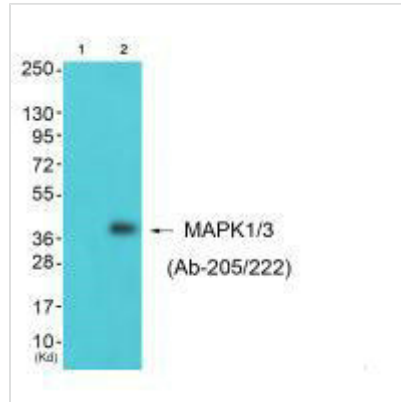
MAPK1/MAPK3 (Ab-205/222) Antibody

Product Code	CSB-PA181879
Storage	Upon receipt, store at -20°C or -80°C. Avoid repeated freeze.
Uniprot No.	P28482
Immunogen	Synthesized peptide derived from Internal of Human MAPK1.
Raised In	Rabbit
Species Reactivity	Human,Mouse,Rat
Specificity	The antibody detects endogenous levels of total MAPK1/3 protein.
Tested Applications	ELISA,WB;WB:1:500-1:3000
Form	Rabbit IgG in phosphate buffered saline (without Mg ²⁺ and Ca ²⁺), pH 7.4, 150mM NaCl, 0.02% sodium azide and 50% glycerol.
Purification Method	The antibody was affinity-purified from rabbit antiserum by affinity-chromatography using epitope-specific immunogen.
Clonality	Polyclonal
Alias	ERK; ERK-2; ERK2; ERT1; Extracellular signal-regulated kinase 2
Product Type	Polyclonal Antibody
Immunogen Species	Homo sapiens (Human)
Target Names	MAPK1/MAPK3

Image



Western blot analysis of extracts from NIH-3T3 cells, using MAPK1/3 (Ab-205/222) antibody.



Western blot analysis of extracts from K562 cells (Lane 2), using MAPK1/3 (Ab-205/222) antibody. The lane on the left is treated with synthesized peptide.

Usage

For Research Use Only. Not for use in diagnostic or therapeutic procedures.