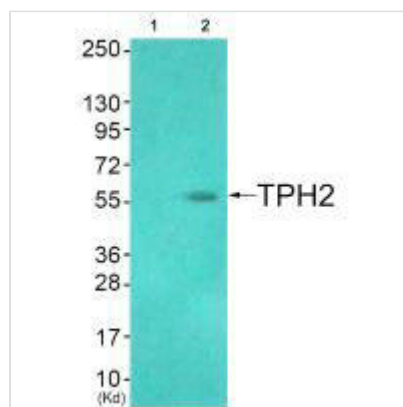




TPH2 (Ab-19) Antibody

Product Code	CSB-PA272667
Storage	Upon receipt, store at -20°C or -80°C. Avoid repeated freeze.
Uniprot No.	Q8IWU9
Immunogen	Synthesized non-phosphopeptide derived from Human TPH2 around the phosphorylation site of serine 19 (G-FI-S(p)-L-D).
Raised In	Rabbit
Species Reactivity	Human, Mouse
Specificity	The antibody detects endogenous levels of total TPH2 protein.
Tested Applications	ELISA, WB; WB: 1:500-1:3000
Form	Rabbit IgG in phosphate buffered saline (without Mg ²⁺ and Ca ²⁺), pH 7.4, 150mM NaCl, 0.02% sodium azide and 50% glycerol.
Purification Method	The antibody was affinity-purified from rabbit antiserum by affinity-chromatography using epitope-specific immunogen.
Clonality	Polyclonal
Alias	Neuronal tryptophan hydroxylase; NTPH; Tryptophan 5- monooxygenase 2;
Product Type	Polyclonal Antibody
Immunogen Species	Homo sapiens (Human)
Target Names	TPH2

Image



Western blot analysis of extracts from HuvEc cells (Lane 2), using TPH2 (Ab-19) antibody. The lane on the left is treated with synthesized peptide.

Usage

For Research Use Only. Not for use in diagnostic or therapeutic procedures.