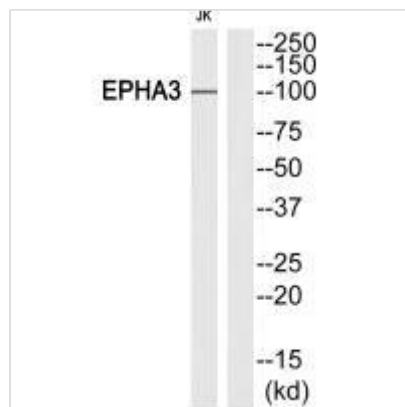




EPHA3 (Ab-602) Antibody

| | |
|----------------------------|--|
| Product Code | CSB-PA030077 |
| Storage | Upon receipt, store at -20°C or -80°C. Avoid repeated freeze. |
| Uniprot No. | P29320 |
| Immunogen | Synthesized peptide derived from Internal of Human EPHA3. |
| Raised In | Rabbit |
| Species Reactivity | Human,Mouse,Rat |
| Specificity | The antibody detects endogenous levels of total EPHA3 protein. |
| Tested Applications | ELISA,WB;WB:1:500-1:3000 |
| Form | Rabbit IgG in phosphate buffered saline (without Mg ²⁺ and Ca ²⁺), pH 7.4, 150mM NaCl, 0.02% sodium azide and 50% glycerol. |
| Purification Method | The antibody was affinity-purified from rabbit antiserum by affinity-chromatography using epitope-specific immunogen. |
| Clonality | Polyclonal |
| Alias | EK4; EPH receptor A3; EPH-like kinase 4; eph-like tyrosine kinase 1; EPHA3 |
| Product Type | Polyclonal Antibody |
| Immunogen Species | Homo sapiens (Human) |
| Target Names | EPHA3 |

Image



Western blot analysis of extracts from Jurkat cells, using EPHA3 (Ab-602)antibody.