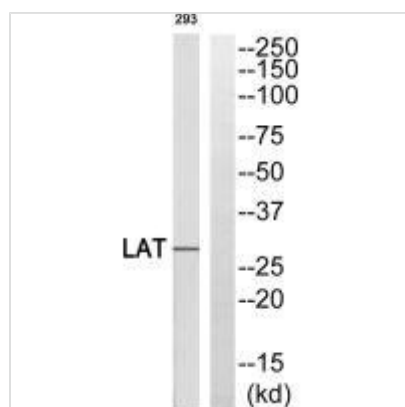




LAT (Ab-255) Antibody

Product Code	CSB-PA153832
Storage	Upon receipt, store at -20°C or -80°C. Avoid repeated freeze.
Uniprot No.	O43561
Immunogen	Synthesized non-phosphopeptide derived from Human LAT around the phosphorylation site of tyrosine 255.
Raised In	Rabbit
Species Reactivity	Human,Mouse,Rat
Specificity	The antibody detects endogenous levels of total LAT protein.
Tested Applications	ELISA,WB;WB:1:500-1:3000
Form	Rabbit IgG in phosphate buffered saline (without Mg ²⁺ and Ca ²⁺), pH 7.4, 150mM NaCl, 0.02% sodium azide and 50% glycerol.
Purification Method	The antibody was affinity-purified from rabbit antiserum by affinity-chromatography using epitope-specific immunogen.
Clonality	Polyclonal
Alias	36 kDa phospho-tyrosine adapter protein; 36 kDa phospho-tyrosine adaptor protein; LAT; LAT1; linker for activation of T cells
Product Type	Polyclonal Antibody
Immunogen Species	Homo sapiens (Human)
Target Names	LAT

Image



Western blot analysis of extracts from 293 cells, using LAT (Ab-255) antibody.