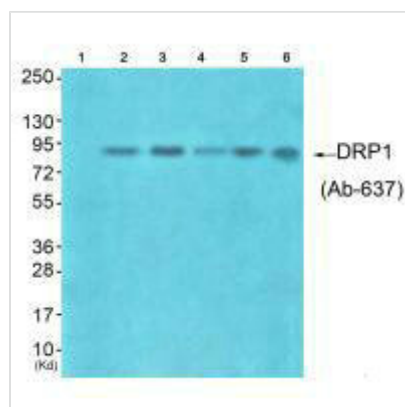




DNM1L (Ab-637) Antibody

| | |
|----------------------------|--|
| Product Code | CSB-PA825071 |
| Storage | Upon receipt, store at -20°C or -80°C. Avoid repeated freeze. |
| Uniprot No. | O00429 |
| Immunogen | Synthesized peptide derived from C-terminal of Human DNM1L. |
| Raised In | Rabbit |
| Species Reactivity | Human,Mouse,Rat |
| Specificity | The antibody detects endogenous levels of total DNM1L protein. |
| Tested Applications | ELISA,WB;WB:1:500-1:3000 |
| Form | Rabbit IgG in phosphate buffered saline (without Mg ²⁺ and Ca ²⁺), pH 7.4, 150mM NaCl, 0.02% sodium azide and 50% glycerol. |
| Purification Method | The antibody was affinity-purified from rabbit antiserum by affinity-chromatography using epitope-specific immunogen. |
| Clonality | Polyclonal |
| Alias | DLP1; DNM1L; Dnm1p/Vps1p-like protein; DRP1; DVLP |
| Product Type | Polyclonal Antibody |
| Immunogen Species | Homo sapiens (Human) |
| Target Names | DNM1L |

Image



Western blot analysis of extracts from HuvEc cells (Lane 2), HepG2 cells (Lane 3), colo cells (Lane 4), 293 cells (Lane 5) and JK cells (Lane 6), using DRP1 (Ab-637) antibody. The lane on the left is treated with synthesized peptide.