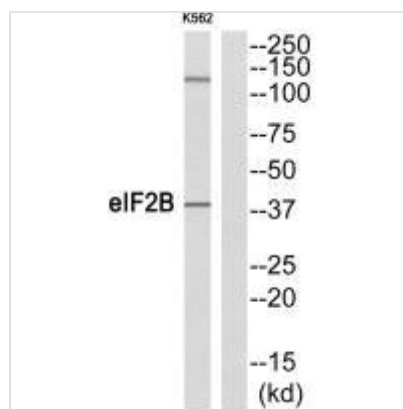




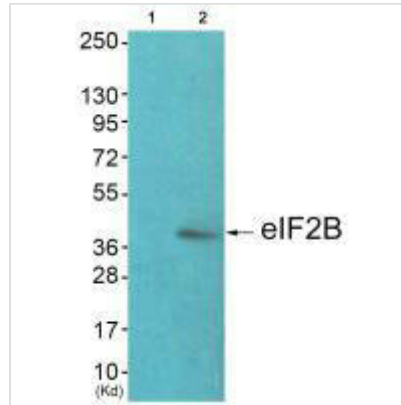
EIF2S2 (Ab-67) Antibody

Product Code	CSB-PA566738
Storage	Upon receipt, store at -20°C or -80°C. Avoid repeated freeze.
Uniprot No.	P20042
Immunogen	Synthesized peptide derived from N-terminal of Human eIF2B.
Raised In	Rabbit
Species Reactivity	Human, Mouse
Specificity	The antibody detects endogenous levels of total eIF2B protein.
Tested Applications	ELISA, WB; WB: 1:500-1:3000
Form	Rabbit IgG in phosphate buffered saline (without Mg ²⁺ and Ca ²⁺), pH 7.4, 150mM NaCl, 0.02% sodium azide and 50% glycerol.
Purification Method	The antibody was affinity-purified from rabbit antiserum by affinity-chromatography using epitope-specific immunogen.
Clonality	Polyclonal
Alias	DKFZp686L18198; eIF-2-beta; EIF2; EIF2B; EIF2beta
Product Type	Polyclonal Antibody
Immunogen Species	Homo sapiens (Human)
Target Names	EIF2S2

Image



Western blot analysis of extracts from K562 cells, using eIF2B (Ab-67) antibody.



Western blot analysis of extracts from JK cells (Lane 2), using eIF2B (Ab-67) antibody. The lane on the left is treated with synthesized peptide.

Usage

For Research Use Only. Not for use in diagnostic or therapeutic procedures.