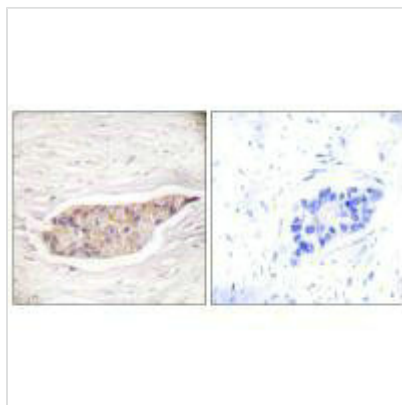




ANXA6 Antibody

Product Code	CSB-PA904851
Storage	Upon receipt, store at -20°C or -80°C. Avoid repeated freeze.
Uniprot No.	P08133
Immunogen	Synthesized peptide derived from Human Annexin A6.
Raised In	Rabbit
Species Reactivity	Human
Specificity	The antibody detects endogenous levels of total Annexin A6 protein.
Tested Applications	ELISA,WB,IHC,IF;WB:1:500-1:3000,IHC:1:50-1:100,IF:1:100-1:500
Form	Rabbit IgG in phosphate buffered saline (without Mg ²⁺ and Ca ²⁺), pH 7.4, 150mM NaCl, 0.02% sodium azide and 50% glycerol.
Purification Method	The antibody was affinity-purified from rabbit antiserum by affinity-chromatography using epitope-specific immunogen.
Clonality	Polyclonal
Alias	67 kDa calelectrin; ANX6; Annexin VI; CPB-II; Calphobindin-II
Product Type	Polyclonal Antibody
Immunogen Species	Homo sapiens (Human)
Target Names	ANXA6

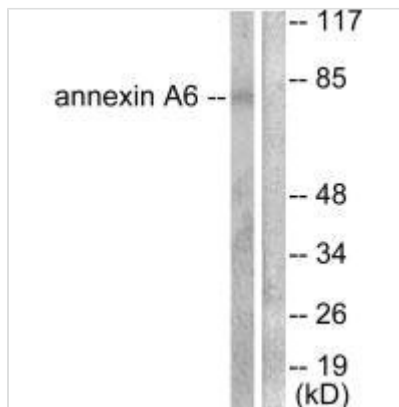
Image



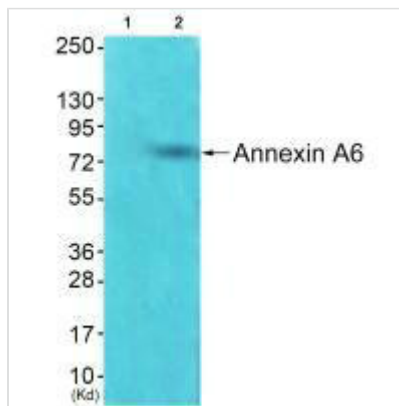
Immunohistochemical analysis of paraffin-embedded human breast carcinoma tissue using Annexin A6 antibody.



Immunofluorescence analysis of HeLa cells, treated with Forskolin (40nM, 30mins), using Annexin A6 antibody.



Western blot analysis of extracts from 293 cells, using Annexin A6 antibody.



Western blot analysis of extracts from HepG2 cells using Annexin A6 antibody. The lane on the left is treated with synthesized peptide.