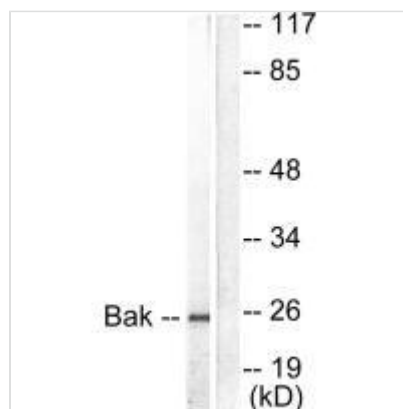




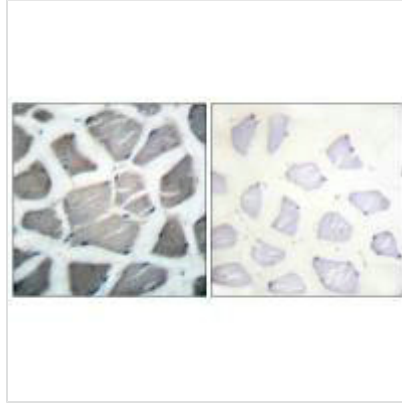
# BAK1 Antibody

|                            |  |
|----------------------------|--|
| <b>Product Code</b>        | CSB-PA886292   |
| <b>Storage</b>             | Upon receipt, store at -20°C or -80°C. Avoid repeated freeze.  |
| <b>Uniprot No.</b>         | Q16611   |
| <b>Immunogen</b>           | Synthesized peptide derived from Human Bak.  |
| <b>Raised In</b>           | Rabbit   |
| <b>Species Reactivity</b>  | Human  |
| <b>Specificity</b>         | The antibody detects endogenous levels of total Bak protein.   |
| <b>Tested Applications</b> | ELISA,WB,IHC,IF;WB:1:500-1:3000,IHC:1:50-1:200,IF:1:100-1:200  |
| <b>Form</b>                | Rabbit IgG in phosphate buffered saline (without Mg <sup>2+</sup> and Ca <sup>2+</sup> ), pH 7.4, 150mM NaCl, 0.02% sodium azide and 50% glycerol. |
| <b>Purification Method</b> | The antibody was affinity-purified from rabbit antiserum by affinity-chromatography using epitope-specific immunogen.                              |
| <b>Clonality</b>           | Polyclonal   |
| <b>Alias</b>               | Bcl-2 homologous antagonist/killer; Apoptosis regulator BAK; Bcl-2-like 7 protein; BAK1; BAK   |
| <b>Product Type</b>        | Polyclonal Antibody  |
| <b>Immunogen Species</b>   | Homo sapiens (Human)   |
| <b>Target Names</b>        | BAK1   |

## Image



Western blot analysis of extracts from 293 cells, using Bak antibody.



Immunohistochemical analysis of paraffin-embedded human skeletal muscle tissue using Bak antibody.

**Usage**

For Research Use Only. Not for use in diagnostic or therapeutic procedures.