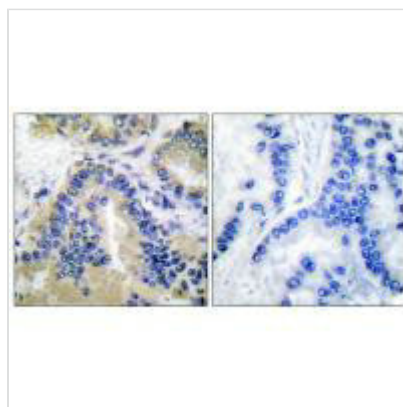




CASP10 Antibody

Product Code	CSB-PA072389
Storage	Upon receipt, store at -20°C or -80°C. Avoid repeated freeze.
Uniprot No.	Q92851
Immunogen	Synthesized peptide derived from Human Caspase 10.
Raised In	Rabbit
Species Reactivity	Human
Specificity	The antibody detects endogenous levels of total Caspase 10 protein.
Tested Applications	ELISA,WB,IHC,IF;WB:1:500-1:3000,IHC:1:50-1:100,IF:1:100-1:500
Form	Rabbit IgG in phosphate buffered saline (without Mg ²⁺ and Ca ²⁺), pH 7.4, 150mM NaCl, 0.02% sodium azide and 50% glycerol.
Purification Method	The antibody was affinity-purified from rabbit antiserum by affinity-chromatography using epitope-specific immunogen.
Clonality	Polyclonal
Alias	ALPS2; CASP10B; FLICE2; Caspase 10 isoform a preproprotein; Caspase 10 isoform b preproprotein
Product Type	Polyclonal Antibody
Immunogen Species	Homo sapiens (Human)
Target Names	CASP10

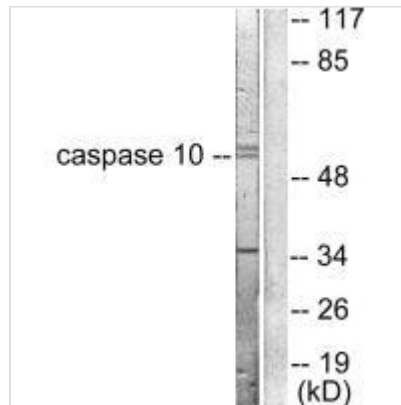
Image



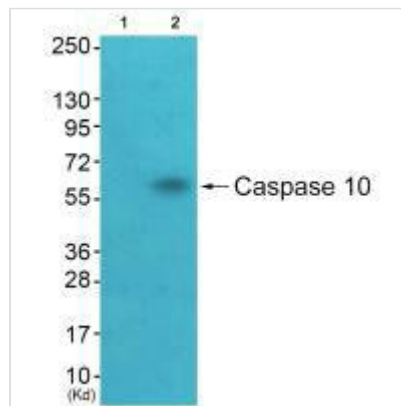
Immunohistochemical analysis of paraffin-embedded human lung carcinoma tissue using Caspase 10 antibody.



Immunofluorescence analysis of HeLa cells, using Caspase 10 antibody.



Western blot analysis of extracts from HeLa cells, using Caspase 10 antibody.



Western blot analysis of extracts from HeLa cells (Lane 2), using Caspase 10 antibody. The lane on the left is treated with synthesized peptide.