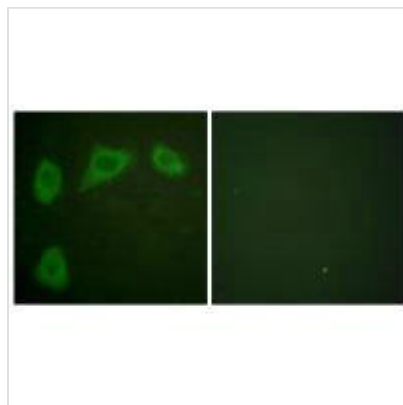




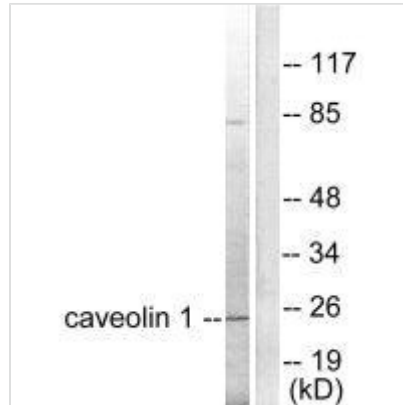
CAV1 Antibody

Product Code	CSB-PA870052
Storage	Upon receipt, store at -20°C or -80°C. Avoid repeated freeze.
Uniprot No.	Q03135
Immunogen	Synthesized peptide derived from Human Caveolin-1.
Raised In	Rabbit
Species Reactivity	Human
Specificity	The antibody detects endogenous levels of total Caveolin-1 protein.
Tested Applications	ELISA,WB,IF;WB:1:500-1:3000,IF:1:100-1:500
Form	Rabbit IgG in phosphate buffered saline (without Mg ²⁺ and Ca ²⁺), pH 7.4, 150mM NaCl, 0.02% sodium azide and 50% glycerol.
Purification Method	The antibody was affinity-purified from rabbit antiserum by affinity-chromatography using epitope-specific immunogen.
Clonality	Polyclonal
Alias	CAV; CAV1; MSTP085; VIP21; caveolae protein
Product Type	Polyclonal Antibody
Immunogen Species	Homo sapiens (Human)
Target Names	CAV1

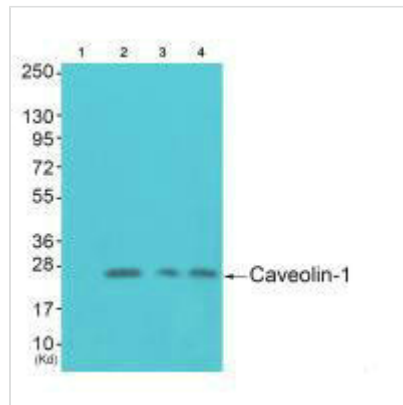
Image



Immunofluorescence analysis of HuvEc cells, using Caveolin-1 antibody.



Western blot analysis of extracts from HuvEc cells, using Caveolin-1 antibody.



Western blot analysis of extracts from HuvEc cells (Lane 2), colo cells (Lane 3) and JK cells (Lane 4), using Caveolin-1 antibody. The lane on the left is treated with synthesized peptide.

Usage

For Research Use Only. Not for use in diagnostic or therapeutic procedures.