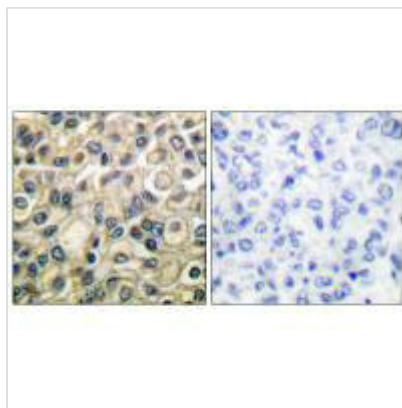




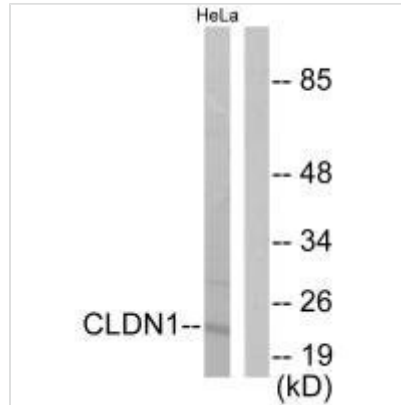
CLDN1 Antibody

Product Code	CSB-PA442054
Storage	Upon receipt, store at -20°C or -80°C. Avoid repeated freeze.
Uniprot No.	O95832
Immunogen	Synthesized peptide derived from Human Claudin 1.
Raised In	Rabbit
Species Reactivity	Human,Mouse,Rat
Specificity	The antibody detects endogenous levels of total Claudin 1 protein.
Tested Applications	ELISA,WB,IHC;WB:1:500-1:3000,IHC:1:50-1:100
Form	Rabbit IgG in phosphate buffered saline (without Mg ²⁺ and Ca ²⁺), pH 7.4, 150mM NaCl, 0.02% sodium azide and 50% glycerol.
Purification Method	The antibody was affinity-purified from rabbit antiserum by affinity-chromatography using epitope-specific immunogen.
Clonality	Polyclonal
Alias	CLD1; CLDN1; SEMP1; Senescence-associated epithelial membrane protein;
Product Type	Polyclonal Antibody
Immunogen Species	Homo sapiens (Human)
Target Names	CLDN1

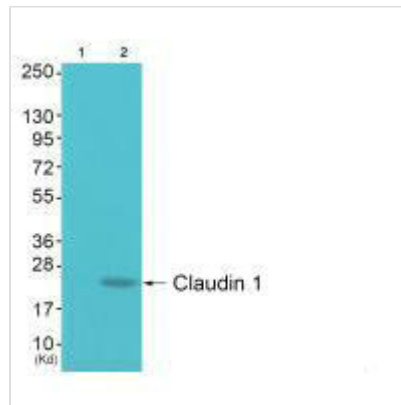
Image



Immunohistochemical analysis of paraffin-embedded human breast carcinoma tissue using Claudin 1 antibody.



Western blot analysis of extracts from HeLa cells, using Claudin 1 antibody.



Western blot analysis of extracts from 293 cells (Lane 2), using Claudin 1 antibody. The lane on the left is treated with synthesized peptide.

Usage

For Research Use Only. Not for use in diagnostic or therapeutic procedures.